

Borough of Highland Park

PLANS OF BOROUGH OF HIGHLAND PARK SAFE ROUTES TO SCHOOL DESIGN ASSISTANCE HIGHLAND PARK SRTS 2016

BOROUGH OF HIGHLAND PARK MIDDLESEX COUNTY
 SCALES AS INDICATED JANUARY 2022

UTILITIES	
CABLE	##
ELECTRIC	##
GAS	##
SANITARY SEWER	##
SANITARY SEWER	##
TELEPHONE	##
WATER	##

PROJECT CATEGORIES	NON-NHS NJDOT CATEGORY 2 - RECONSTRUCTION
--------------------	---

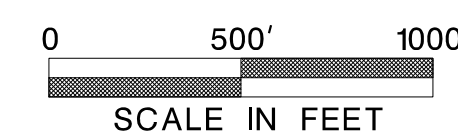
C.S. N/A



HIGHWAY TYPE:	- ##
---------------	------

ROW SECTION	N/A
-------------	-----

KEY MAP



INDEX OF SHEETS	
SHEET NO.	DESCRIPTION
1	KEY
2-14	CONSTRUCTION PLANS

STANDARD ROADWAY CONSTRUCTION - TRAFFIC CONTROL - BRIDGE CONSTRUCTION DETAILS BOOKLET 2016, AND STANDARD ELECTRICAL DETAILS BOOKLET, 2007, ARE APPLICABLE TO THIS PROJECT EXCEPT FOR THOSE DETAILS CONTAINED HEREIN.

MID-POINT OF PROJECT
 LATITUDE : 40° 30' 2.86" ± N
 LONGITUDE : 74° 25' 40.48" ± W

**PROGRESS PRINT
 01-21-2022
 FOR DISCUSSION
 PURPOSES ONLY**

Submitted by _____ Date _____
 ###
 Approved by _____ Date _____
 ###

"CHANGES MADE TO THESE PLANS SINCE SIGNATURE BY THE CONSULTANT MAY BE DETERMINED BY COMPARISON OF THE PLANS FILED AT THE DEPARTMENT WITH THOSE FILED AT THE OFFICE OF THE CONSULTANT"

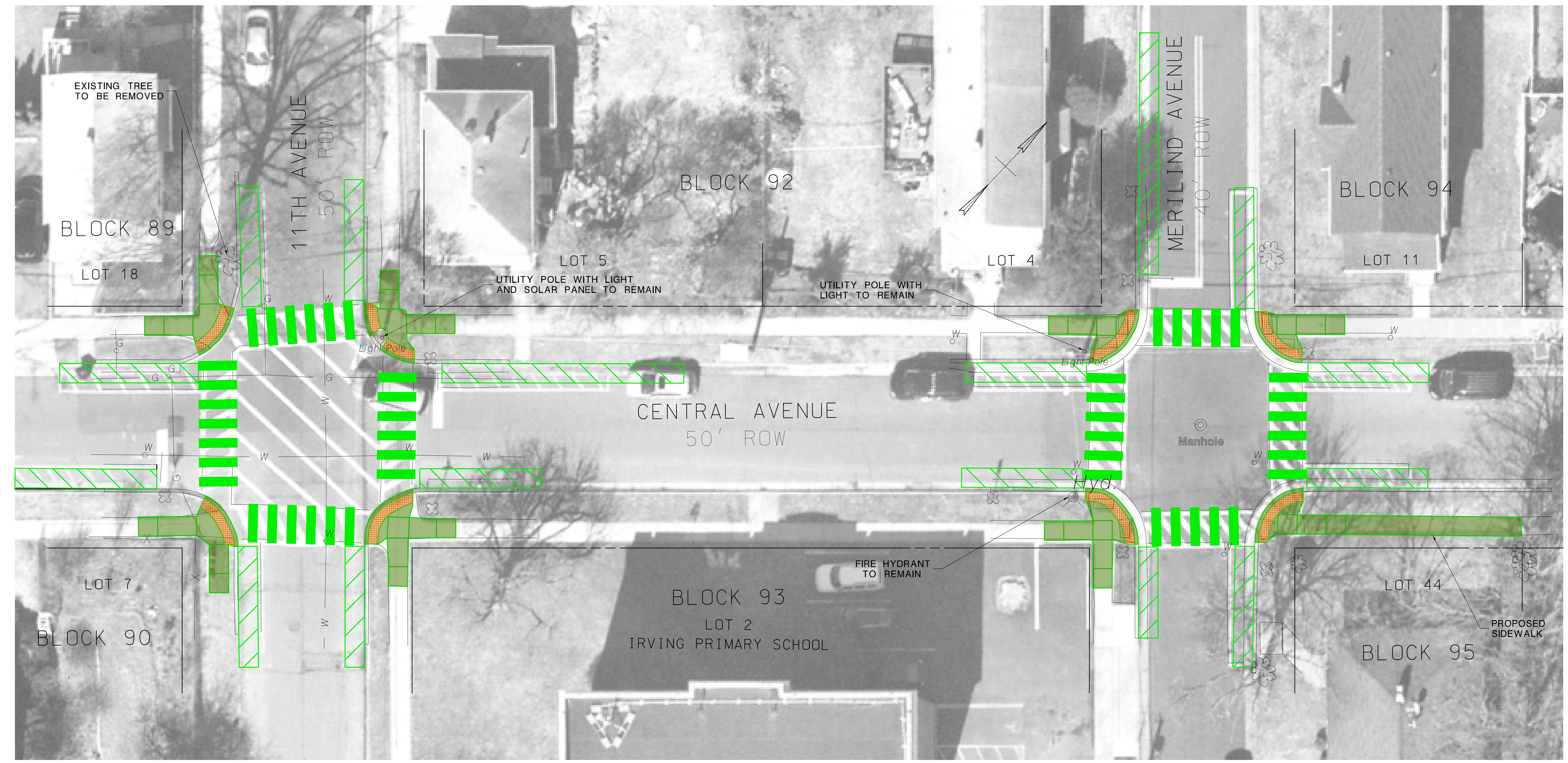
NV5, INC.

2019 NEW JERSEY DEPARTMENT OF TRANSPORTATION STANDARD SPECIFICATIONS FOR ROAD AND BRIDGE CONSTRUCTION TO GOVERN

BOROUGH OF HIGHLAND PARK

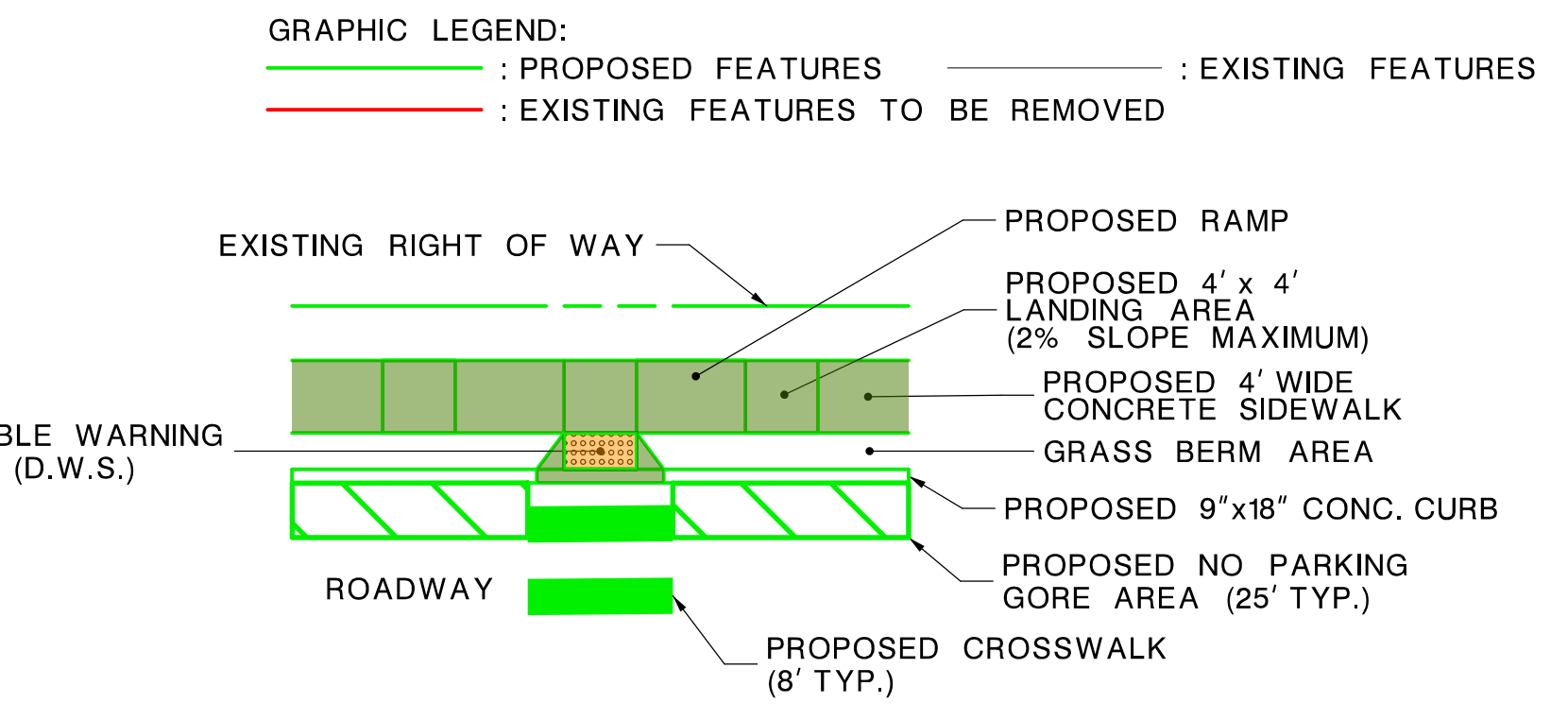


COUNTY OF MIDDLESEX



GENERAL NOTES:
 1. SOURCE OF MAPPING:
 - NV5 SURVEY
 - SELECT NEARMAP AERIAL IMAGERY
 - NJ OFFICE OF INFORMATION TECHNOLOGY (NJOIT), OFFICE OF GEOGRAPHIC INFORMATION SYSTEMS (OGIS) (2015)
 2. SOURCE OF TAX PARCEL INFORMATION:
 - NJGIN WEBSITE (BOUNDARIES APPROXIMATE)
 - BOROUGH OF HIGHLAND PARK TAX MAPS
 3. SOURCE OF UTILITY INFORMATION:
 - UTILITY VERIFICATION PROCESS

CONSTRUCTION NOTES:
 1. CURB CONSTRUCTION INCLUDES 18" PAVEMENT STRIP REPLACEMENT - NOT SHOWN FOR CLARTY PURPOSES



PROGRESS PRINT
01-21-2022

REVISION	BY	C'K'D	DATE

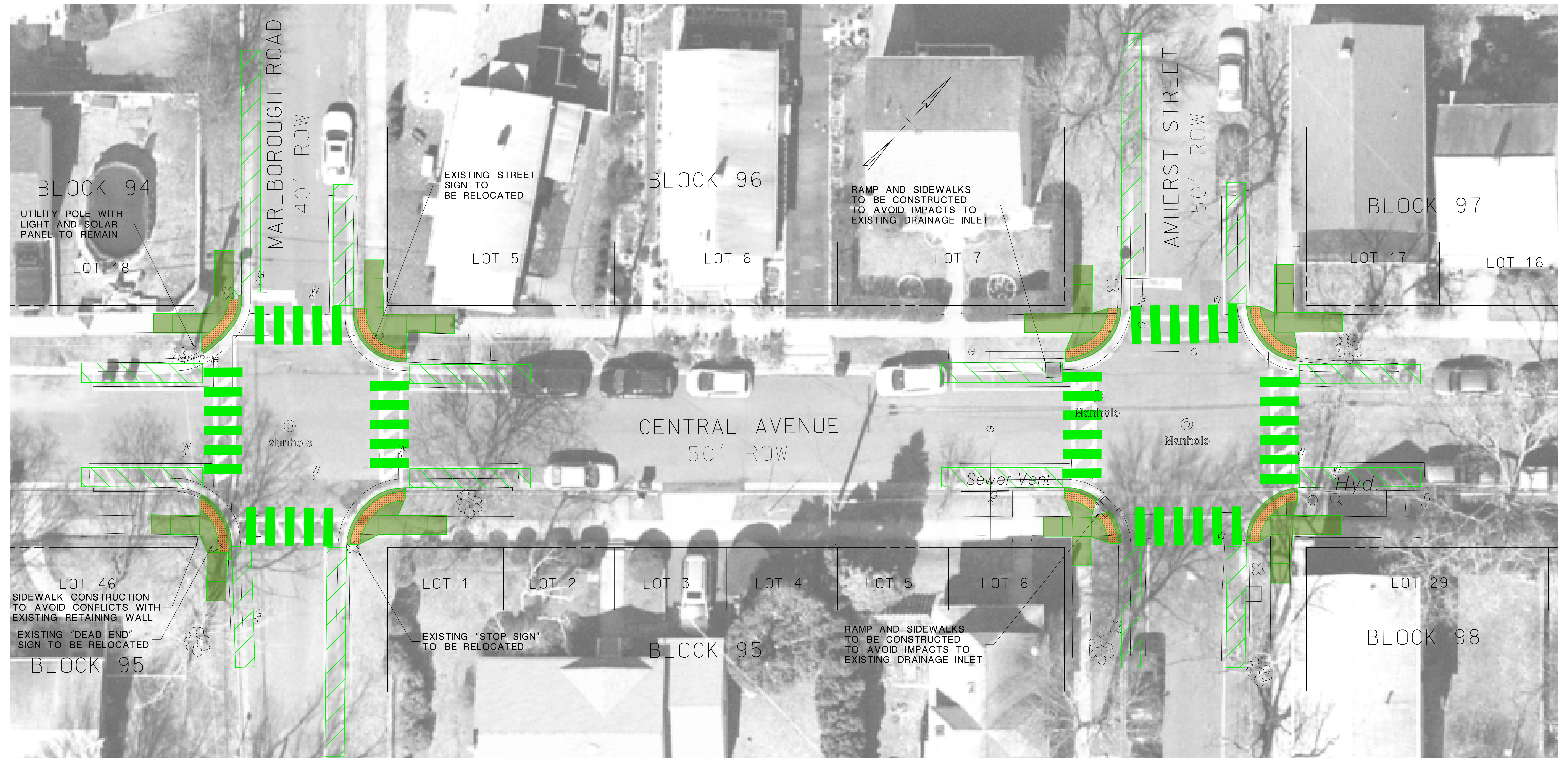
NEW JERSEY DEPARTMENT OF TRANSPORTATION

CONSTRUCTION PLANS

BOROUGH OF HIGHLAND PARK
 SAFE ROUTES TO SCHOOL DESIGN ASSISTANCE
 HIGHLAND PARK SRTS 2016 - PHASE 1
PRELIMINARY ENGINEERING PHASE

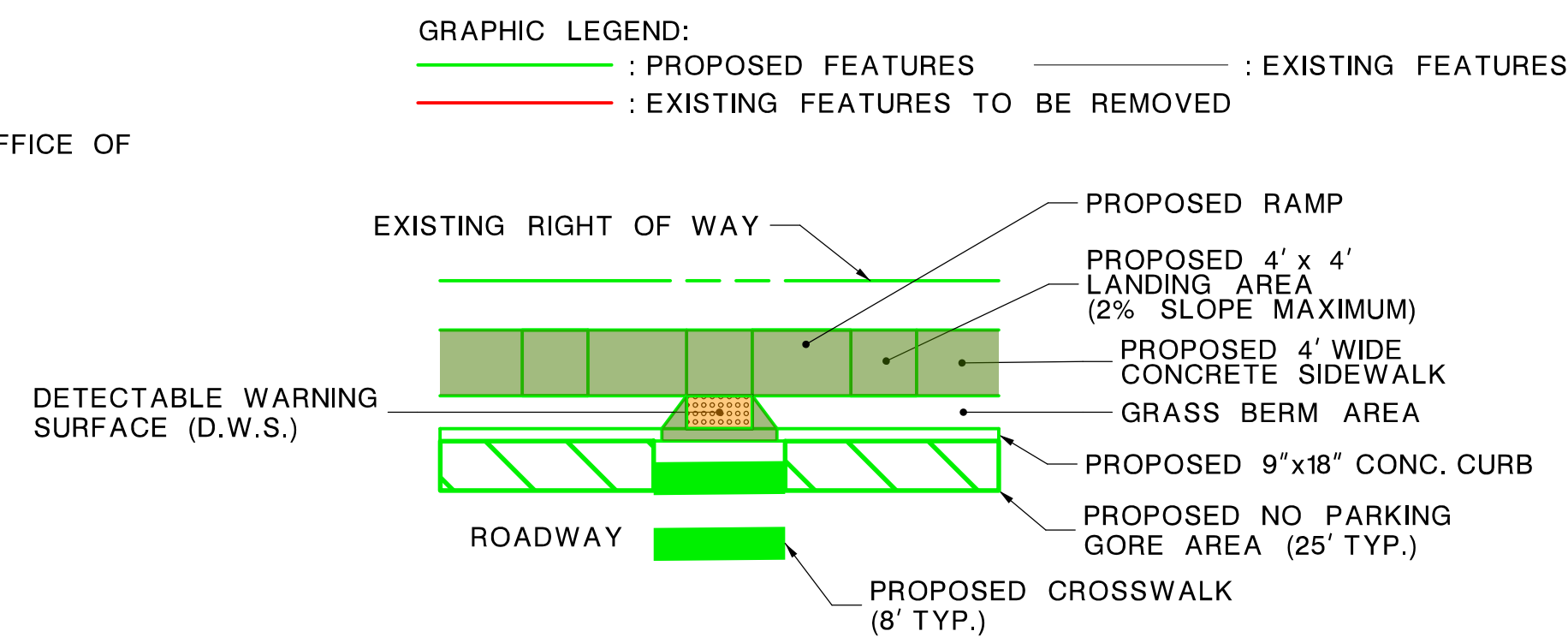
NV5, INC.
 CERTIFICATION OF AUTHORIZATION NO. 24GA27930500

2
14



GENERAL NOTES:
 1. SOURCE OF MAPPING:
 - NV5 SURVEY
 - SELECT NEARMAP AERIAL IMAGERY
 - NJ OFFICE OF INFORMATION TECHNOLOGY (NJOIT), OFFICE OF GEOGRAPHIC INFORMATION SYSTEMS (OGIS) (2015)
 2. SOURCE OF TAX PARCEL INFORMATION:
 - NJGIN WEBSITE (BOUNDARIES APPROXIMATE)
 - BOROUGH OF HIGHLAND PARK TAX MAPS
 3. SOURCE OF UTILITY INFORMATION:
 - UTILITY VERIFICATION PROCESS

CONSTRUCTION NOTES:
 1. CURB CONSTRUCTION INCLUDES 18" PAVEMENT STRIP REPLACEMENT - NOT SHOWN FOR CLARTY PURPOSES



PROGRESS PRINT
01-21-2022

REVISION	BY	C'K'D	DATE

NEW JERSEY DEPARTMENT OF TRANSPORTATION

CONSTRUCTION PLANS

BOROUGH OF HIGHLAND PARK
 SAFE ROUTES TO SCHOOL DESIGN ASSISTANCE
 HIGHLAND PARK SRTS 2016 - PHASE 1
PRELIMINARY ENGINEERING PHASE

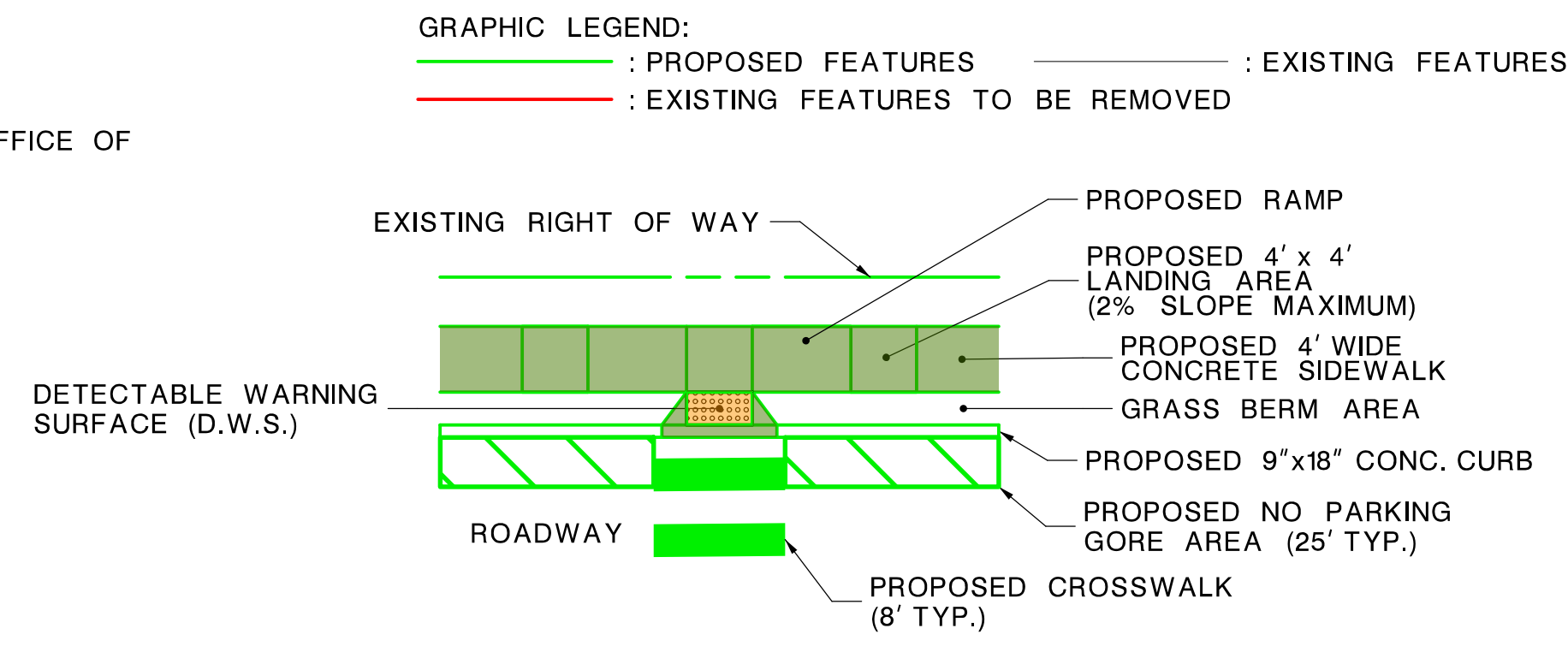
NVS, INC.
 CERTIFICATION OF AUTHORIZATION NO. 24GA27930500

3
14



THIS INTERSECTION IS NO LONGER UNDER CONTRACT - IMPROVEMENTS PREVIOUSLY CONSTRUCTED UNDER SEPARATE CONTRACT

- GENERAL NOTES:**
- SOURCE OF MAPPING:
 - NV5 SURVEY
 - SELECT NEARMAP AERIAL IMAGERY
 - NJ OFFICE OF INFORMATION TECHNOLOGY (NJOIT), OFFICE OF GEOGRAPHIC INFORMATION SYSTEMS (OGIS) (2015)
 - SOURCE OF TAX PARCEL INFORMATION:
 - NJGIN WEBSITE (BOUNDARIES APPROXIMATE)
 - BOROUGH OF HIGHLAND PARK TAX MAPS
 - SOURCE OF UTILITY INFORMATION:
 - UTILITY VERIFICATION PROCESS
- CONSTRUCTION NOTES:**
- CURB CONSTRUCTION INCLUDES 18" PAVEMENT STRIP REPLACEMENT - NOT SHOWN FOR CLARITY PURPOSES



**PROGRESS PRINT
01-21-2022**

REVISION	BY	C'K'D	DATE

NEW JERSEY DEPARTMENT OF TRANSPORTATION

CONSTRUCTION PLANS

BOROUGH OF HIGHLAND PARK
SAFE ROUTES TO SCHOOL DESIGN ASSISTANCE
HIGHLAND PARK SRTS 2016 - PHASE 1
PRELIMINARY ENGINEERING PHASE

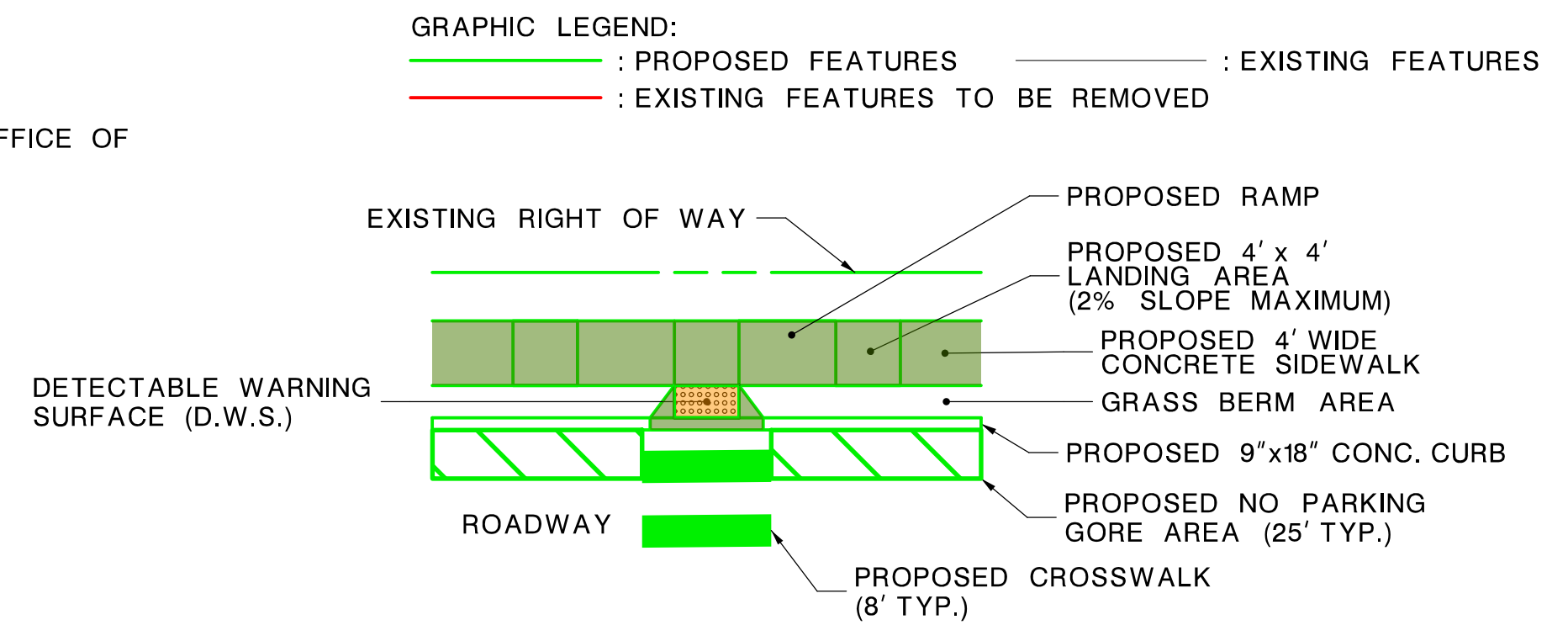
NV5, INC.
CERTIFICATION OF AUTHORIZATION NO. 24GA27930500

4
14



THIS INTERSECTION IS NO LONGER UNDER CONTRACT - IMPROVEMENTS PREVIOUSLY CONSTRUCTED UNDER SEPARATE CONTRACT

- GENERAL NOTES:**
- SOURCE OF MAPPING:
 - NV5 SURVEY
 - SELECT NEARMAP AERIAL IMAGERY
 - NJ OFFICE OF INFORMATION TECHNOLOGY (NJOIT), OFFICE OF GEOGRAPHIC INFORMATION SYSTEMS (OGIS) (2015)
 - SOURCE OF TAX PARCEL INFORMATION:
 - NJGIN WEBSITE (BOUNDARIES APPROXIMATE)
 - BOROUGH OF HIGHLAND PARK TAX MAPS
 - SOURCE OF UTILITY INFORMATION:
 - UTILITY VERIFICATION PROCESS
- CONSTRUCTION NOTES:**
- CURB CONSTRUCTION INCLUDES 18" PAVEMENT STRIP REPLACEMENT - NOT SHOWN FOR CLARTY PURPOSES



PROGRESS PRINT
01-21-2022

REVISION	BY	C'K'D	DATE

NEW JERSEY DEPARTMENT OF TRANSPORTATION

CONSTRUCTION PLANS

BOROUGH OF HIGHLAND PARK
SAFE ROUTES TO SCHOOL DESIGN ASSISTANCE
HIGHLAND PARK SRTS 2016 - PHASE 1
PRELIMINARY ENGINEERING PHASE

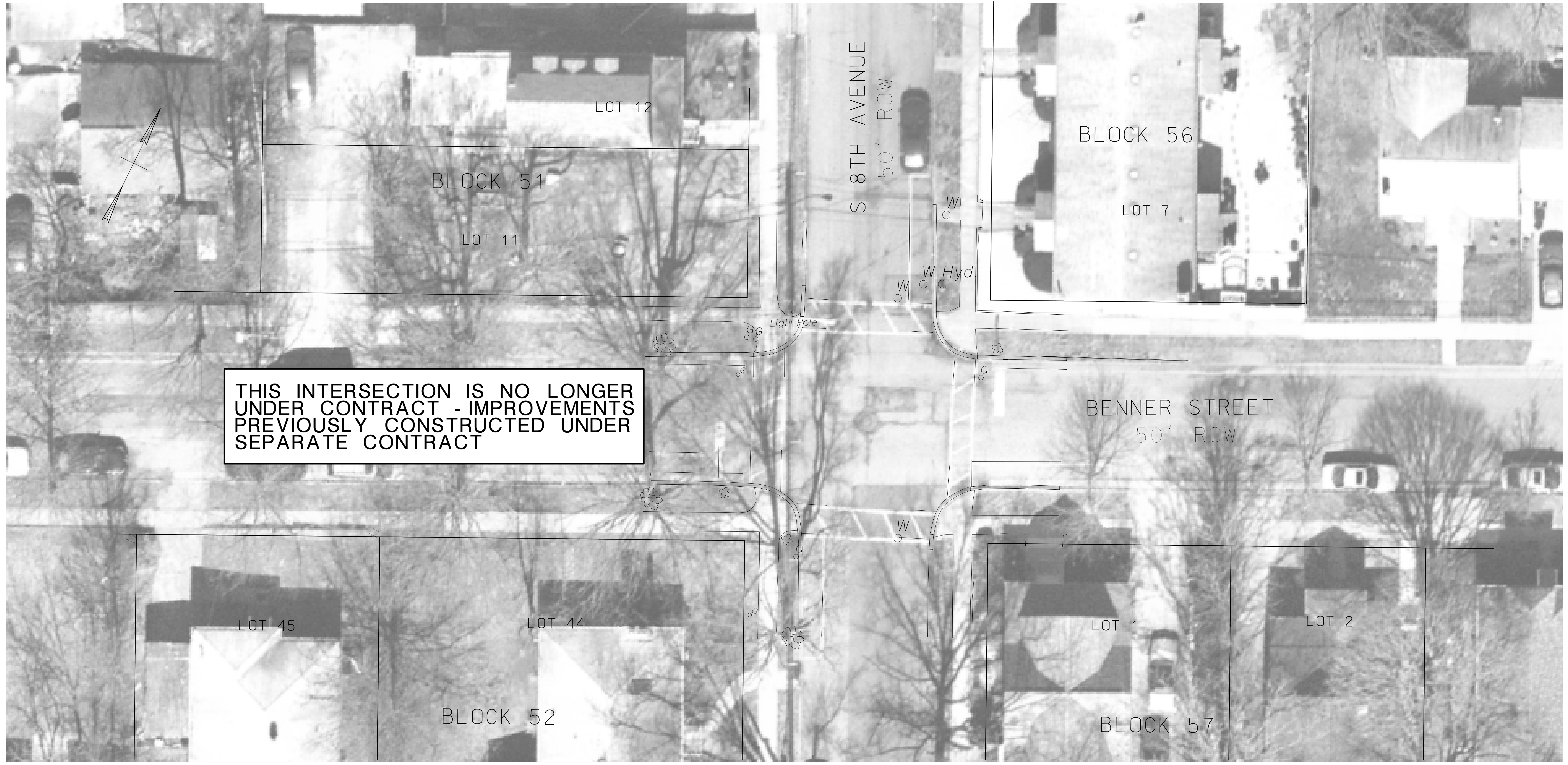
NV5, INC.
CERTIFICATION OF AUTHORIZATION NO. 24GA27930500

5
14

BOROUGH OF HIGHLAND PARK

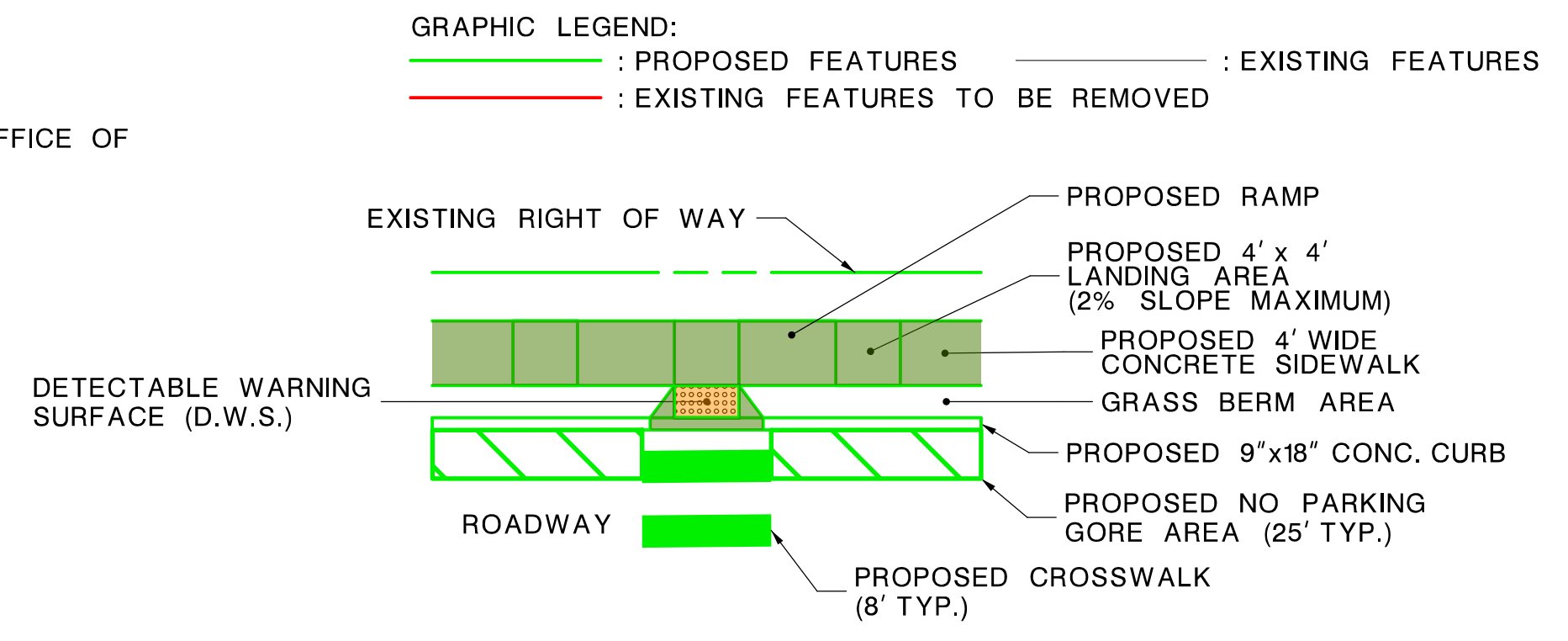


COUNTY OF MIDDLESEX



THIS INTERSECTION IS NO LONGER UNDER CONTRACT - IMPROVEMENTS PREVIOUSLY CONSTRUCTED UNDER SEPARATE CONTRACT

- GENERAL NOTES:**
- SOURCE OF MAPPING:**
 - NV5 SURVEY
 - SELECT NEARMAP AERIAL IMAGERY
 - NJ OFFICE OF INFORMATION TECHNOLOGY (NJOIT), OFFICE OF GEOGRAPHIC INFORMATION SYSTEMS (OGIS) (2015)
 - SOURCE OF TAX PARCEL INFORMATION:**
 - NJGIN WEBSITE (BOUNDARIES APPROXIMATE)
 - BOROUGH OF HIGHLAND PARK TAX MAPS
 - SOURCE OF UTILITY INFORMATION:**
 - UTILITY VERIFICATION PROCESS
- CONSTRUCTION NOTES:**
- CURB CONSTRUCTION INCLUDES 18" PAVEMENT STRIP REPLACEMENT - NOT SHOWN FOR CLARTY PURPOSES



PROGRESS PRINT
01-21-2022

REVISION	BY	C'K'D	DATE

NEW JERSEY DEPARTMENT OF TRANSPORTATION

CONSTRUCTION PLANS

BOROUGH OF HIGHLAND PARK
SAFE ROUTES TO SCHOOL DESIGN ASSISTANCE
HIGHLAND PARK SRTS 2016 - PHASE 1
PRELIMINARY ENGINEERING PHASE

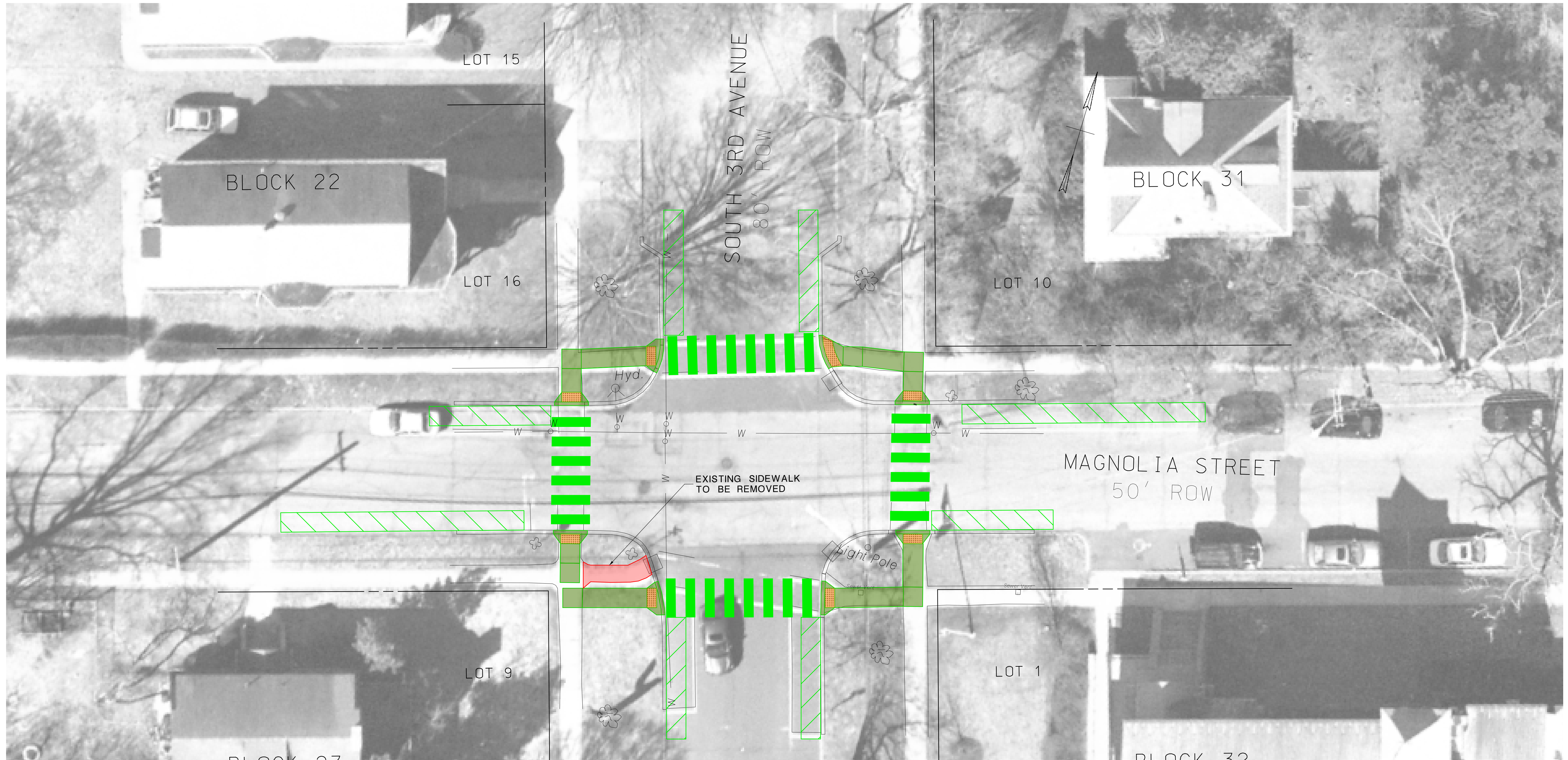
NVS, INC.
CERTIFICATION OF AUTHORIZATION NO. 24GA27930500

FILE: F:\Project\2862-00078601 - Highland Park, 2016 SRTS - Phase 1\Technical\01-CADD\Construction\2-05.dwg

BOROUGH OF HIGHLAND PARK

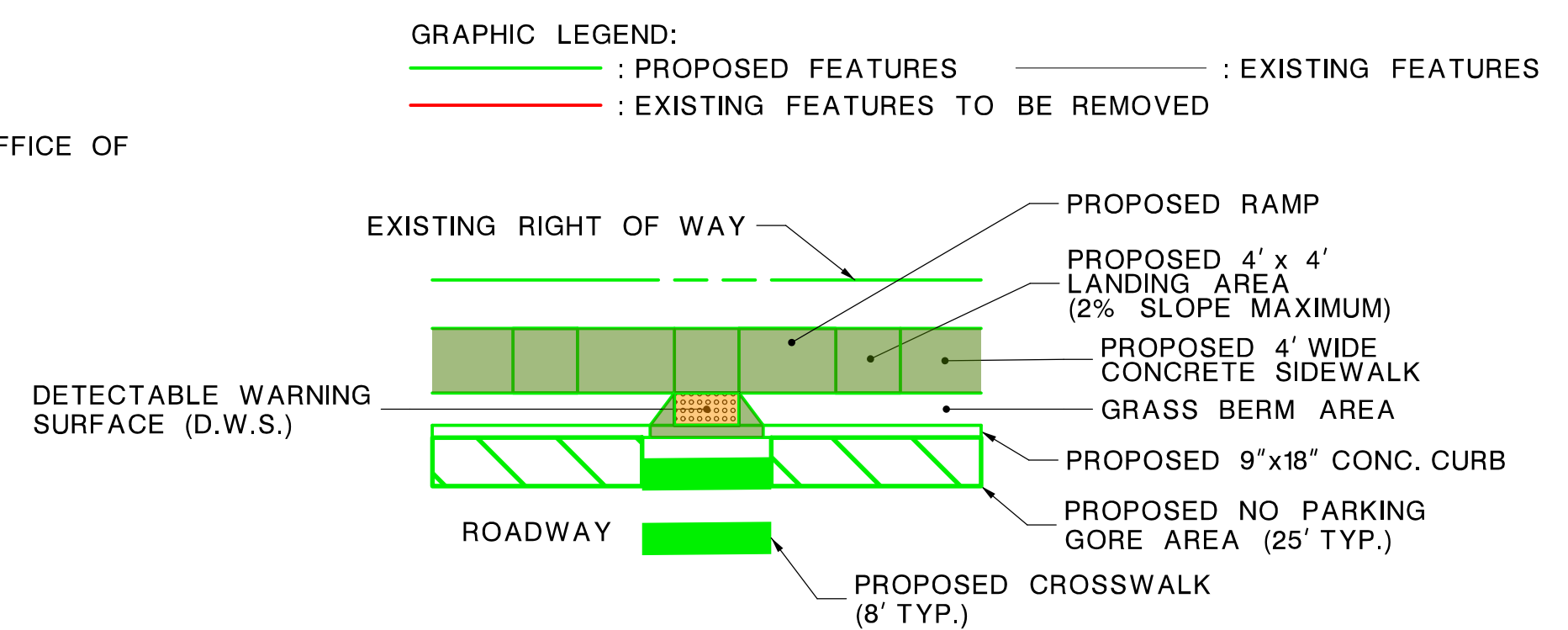


COUNTY OF MIDDLESEX



- GENERAL NOTES:**
- SOURCE OF MAPPING:**
 - NV5 SURVEY
 - SELECT NEARMAP AERIAL IMAGERY
 - NJ OFFICE OF INFORMATION TECHNOLOGY (NJOIT), OFFICE OF GEOGRAPHIC INFORMATION SYSTEMS (OGIS) (2015)
 - SOURCE OF TAX PARCEL INFORMATION:**
 - NJGIN WEBSITE (BOUNDARIES APPROXIMATE)
 - BOROUGH OF HIGHLAND PARK TAX MAPS
 - SOURCE OF UTILITY INFORMATION:**
 - UTILITY VERIFICATION PROCESS

- CONSTRUCTION NOTES:**
- CURB CONSTRUCTION INCLUDES 18" PAVEMENT STRIP REPLACEMENT - NOT SHOWN FOR CLARTY PURPOSES



PROGRESS PRINT
01-21-2022

REVISION	BY	C'K'D	DATE

NEW JERSEY DEPARTMENT OF TRANSPORTATION

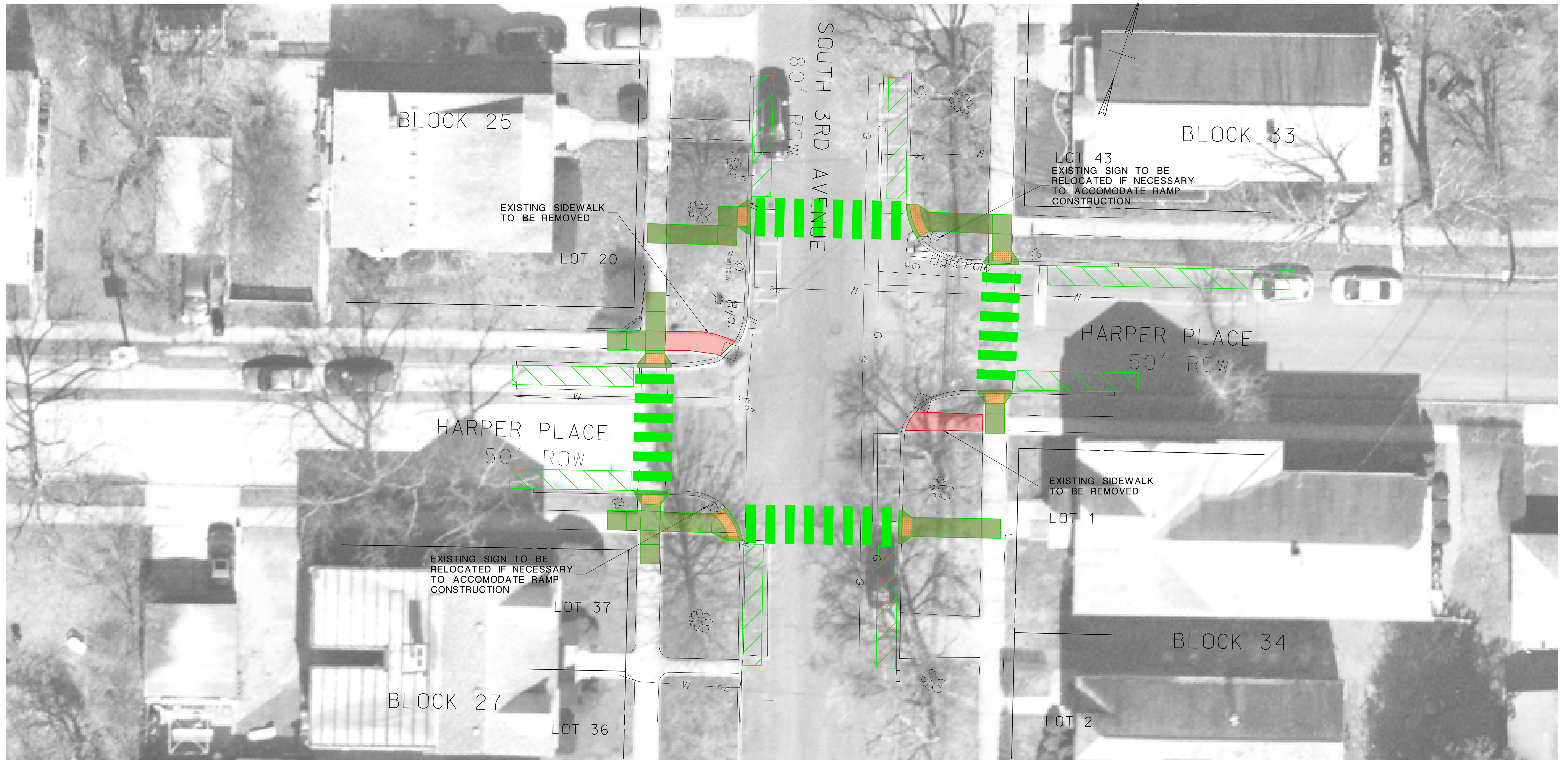
CONSTRUCTION PLANS

BOROUGH OF HIGHLAND PARK
SAFE ROUTES TO SCHOOL DESIGN ASSISTANCE
HIGHLAND PARK SRTS 2016 - PHASE 1
PRELIMINARY ENGINEERING PHASE

NV5, INC.
CERTIFICATION OF AUTHORIZATION NO. 24GA27930500

BOROUGH OF HIGHLAND PARK

COUNTY OF MIDDLESEX

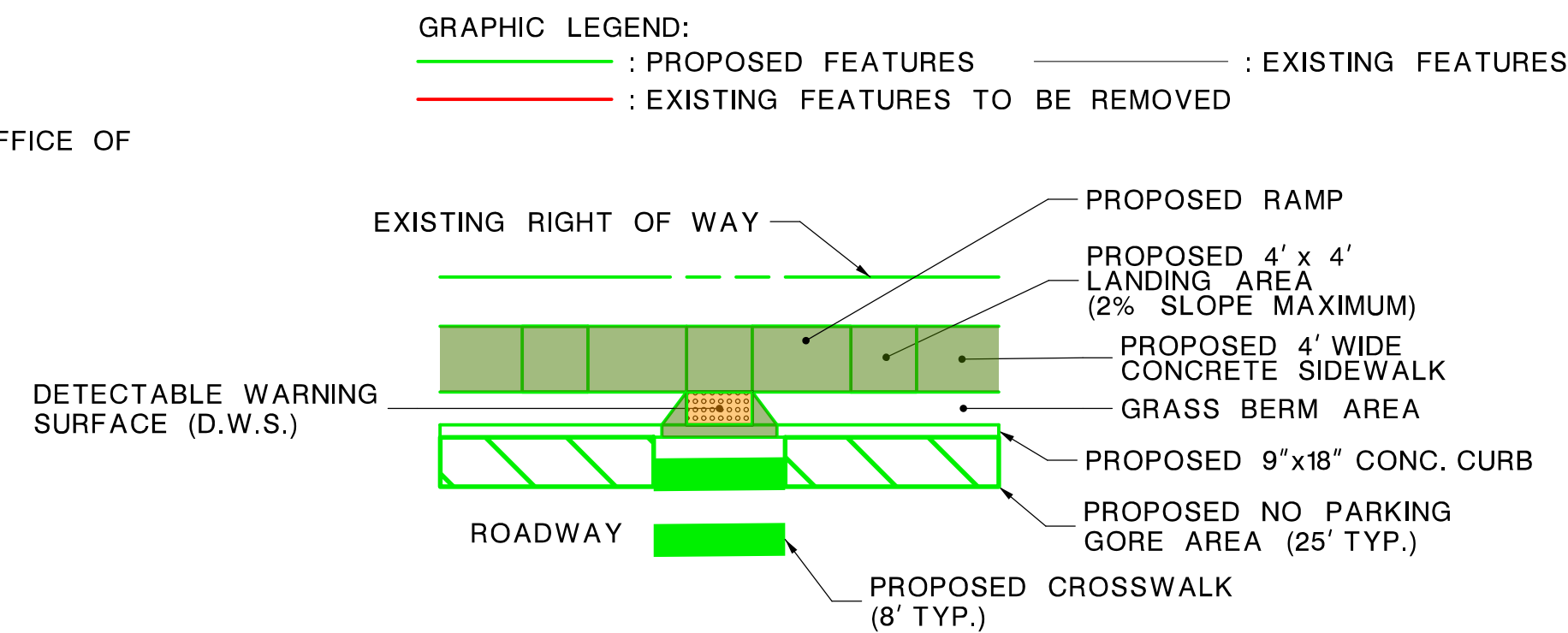


GENERAL NOTES:

- SOURCE OF MAPPING:
 - NV5 SURVEY
 - SELECT NEARMAP AERIAL IMAGERY
 - NJ OFFICE OF INFORMATION TECHNOLOGY (NJOIT), OFFICE OF GEOGRAPHIC INFORMATION SYSTEMS (OGIS) (2015)
- SOURCE OF TAX PARCEL INFORMATION:
 - NJGIN WEBSITE (BOUNDARIES APPROXIMATE)
 - BOROUGH OF HIGHLAND PARK TAX MAPS
- SOURCE OF UTILITY INFORMATION:
 - UTILITY VERIFICATION PROCESS

CONSTRUCTION NOTES:

- CURB CONSTRUCTION INCLUDES 18" PAVEMENT STRIP REPLACEMENT - NOT SHOWN FOR CLARTY PURPOSES



PROGRESS PRINT
01-21-2022

REVISION	BY	C'K'D	DATE

NEW JERSEY DEPARTMENT OF TRANSPORTATION

CONSTRUCTION PLANS

BOROUGH OF HIGHLAND PARK
SAFE ROUTES TO SCHOOL DESIGN ASSISTANCE
HIGHLAND PARK SRTS 2016 - PHASE 1
PRELIMINARY ENGINEERING PHASE

NVS, INC.
CERTIFICATION OF AUTHORIZATION NO. 24GA27930500

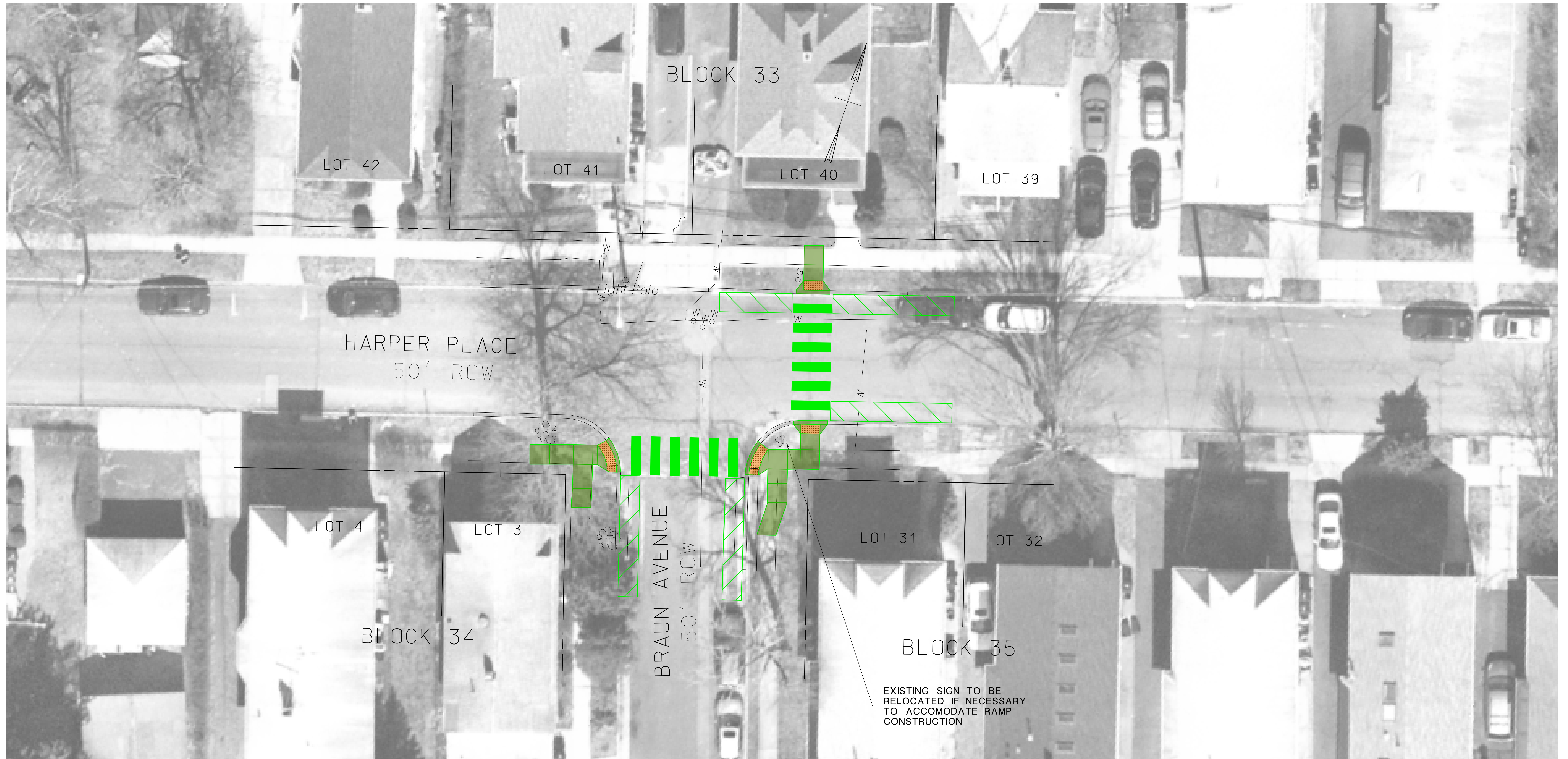
8
14

FILE: F:\Project\2862-00078601 - Highland Park 2016 SRTS - Phase 1\Technical\01-CADD\Construction\2-07.dwg

BOROUGH OF HIGHLAND PARK



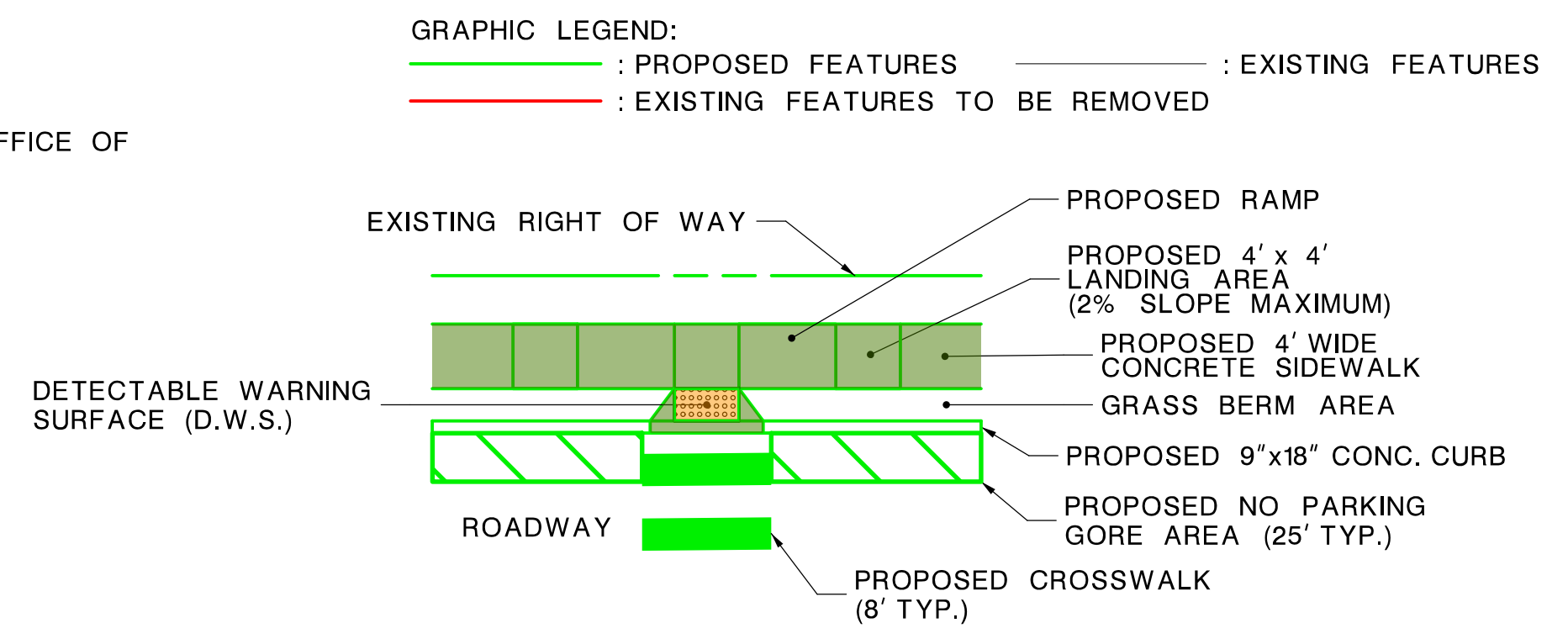
COUNTY OF MIDDLESEX



EXISTING SIGN TO BE RELOCATED IF NECESSARY TO ACCOMMODATE RAMP CONSTRUCTION

- GENERAL NOTES:**
- SOURCE OF MAPPING:**
 - NV5 SURVEY
 - SELECT NEARMAP AERIAL IMAGERY
 - NJ OFFICE OF INFORMATION TECHNOLOGY (NJOIT), OFFICE OF GEOGRAPHIC INFORMATION SYSTEMS (OGIS) (2015)
 - SOURCE OF TAX PARCEL INFORMATION:**
 - NJGIN WEBSITE (BOUNDARIES APPROXIMATE)
 - BOROUGH OF HIGHLAND PARK TAX MAPS
 - SOURCE OF UTILITY INFORMATION:**
 - UTILITY VERIFICATION PROCESS

- CONSTRUCTION NOTES:**
- CURB CONSTRUCTION INCLUDES 18" PAVEMENT STRIP REPLACEMENT - NOT SHOWN FOR CLARTY PURPOSES



PROGRESS PRINT
01-21-2022

REVISION	BY	C'K'D	DATE

NEW JERSEY DEPARTMENT OF TRANSPORTATION

CONSTRUCTION PLANS

BOROUGH OF HIGHLAND PARK
SAFE ROUTES TO SCHOOL DESIGN ASSISTANCE
HIGHLAND PARK SRTS 2016 - PHASE 1
PRELIMINARY ENGINEERING PHASE

NV5, INC.
CERTIFICATION OF AUTHORIZATION NO. 24GA27930500

BOROUGH OF HIGHLAND PARK



COUNTY OF MIDDLESEX



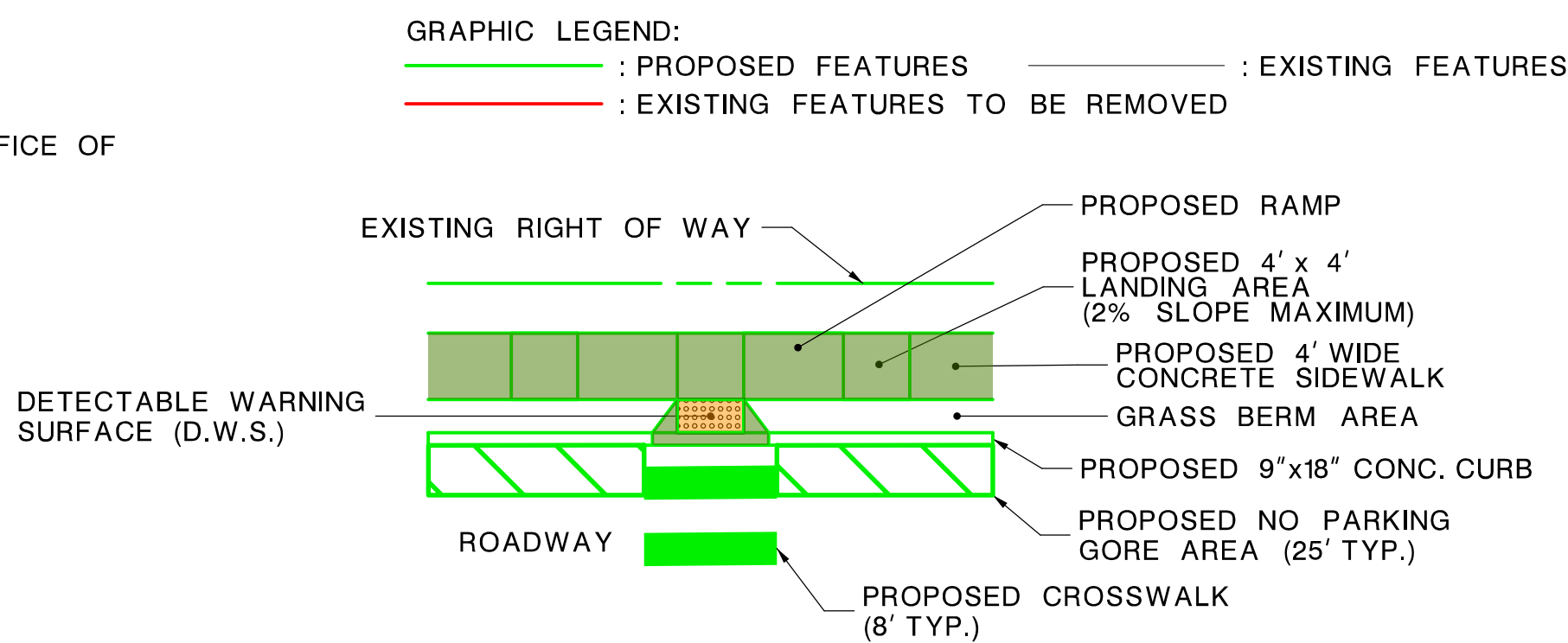
RAMP AND SIDEWALKS TO BE CONSTRUCTED TO AVOID IMPACTS TO EXISTING DRAINAGE INLET

RAMP AND SIDEWALKS TO BE CONSTRUCTED TO AVOID IMPACTS TO EXISTING DRAINAGE INLET

STREET SIGN TO BE RELOCATED

- GENERAL NOTES:**
- SOURCE OF MAPPING:**
 - NV5 SURVEY
 - SELECT NEARMAP AERIAL IMAGERY
 - NJ OFFICE OF INFORMATION TECHNOLOGY (NJOIT), OFFICE OF GEOGRAPHIC INFORMATION SYSTEMS (OGIS) (2015)
 - SOURCE OF TAX PARCEL INFORMATION:**
 - NJGIN WEBSITE (BOUNDARIES APPROXIMATE)
 - BOROUGH OF HIGHLAND PARK TAX MAPS
 - SOURCE OF UTILITY INFORMATION:**
 - UTILITY VERIFICATION PROCESS

- CONSTRUCTION NOTES:**
- CURB CONSTRUCTION INCLUDES 18" PAVEMENT STRIP REPLACEMENT - NOT SHOWN FOR CLARTY PURPOSES



PROGRESS PRINT
01-21-2022

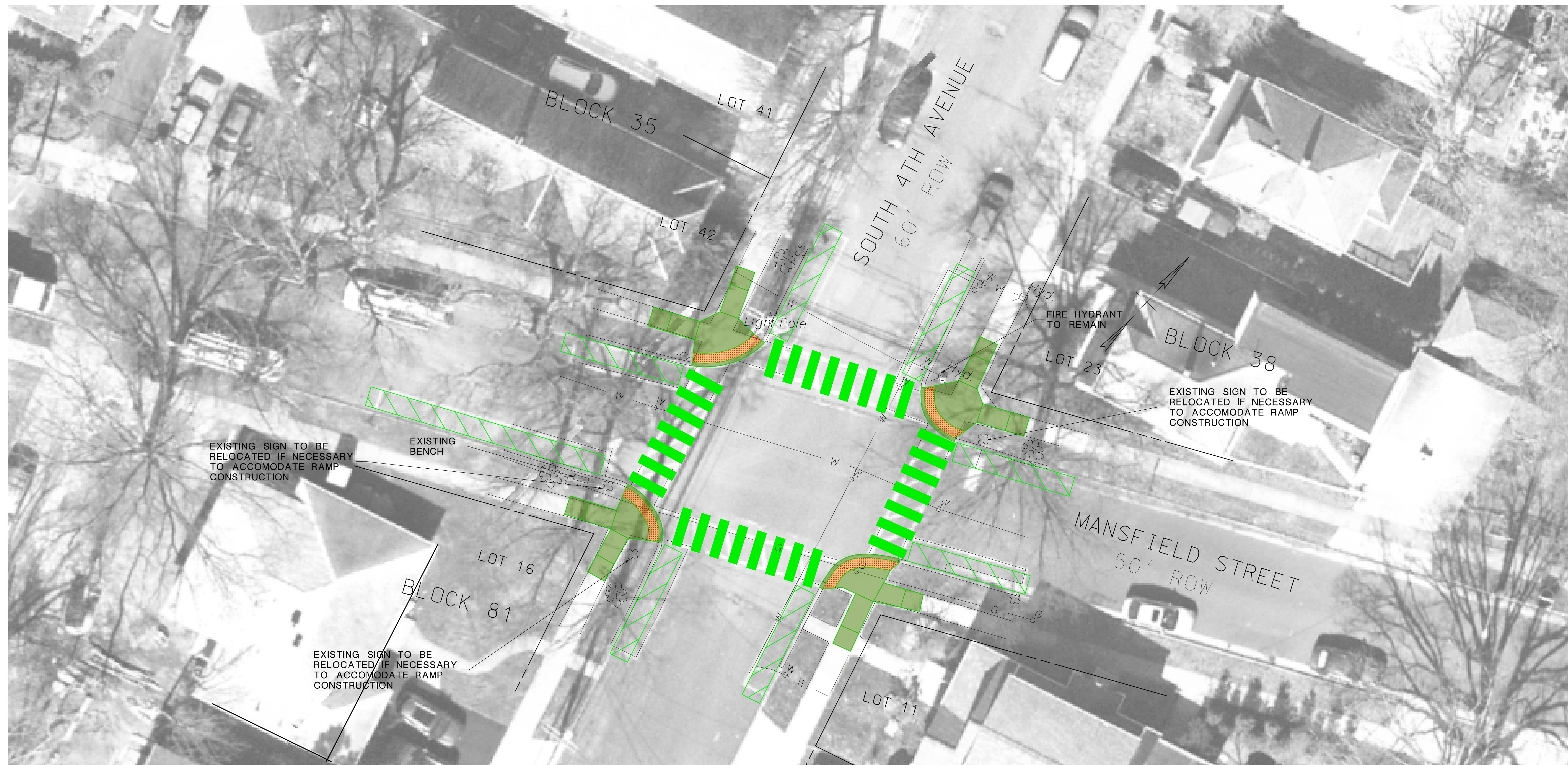
REVISION	BY	C'K'D	DATE

NEW JERSEY DEPARTMENT OF TRANSPORTATION

CONSTRUCTION PLANS

BOROUGH OF HIGHLAND PARK
SAFE ROUTES TO SCHOOL DESIGN ASSISTANCE
HIGHLAND PARK SRTS 2016 - PHASE 1
PRELIMINARY ENGINEERING PHASE

NVS, INC.
CERTIFICATION OF AUTHORIZATION NO. 24GA27930500

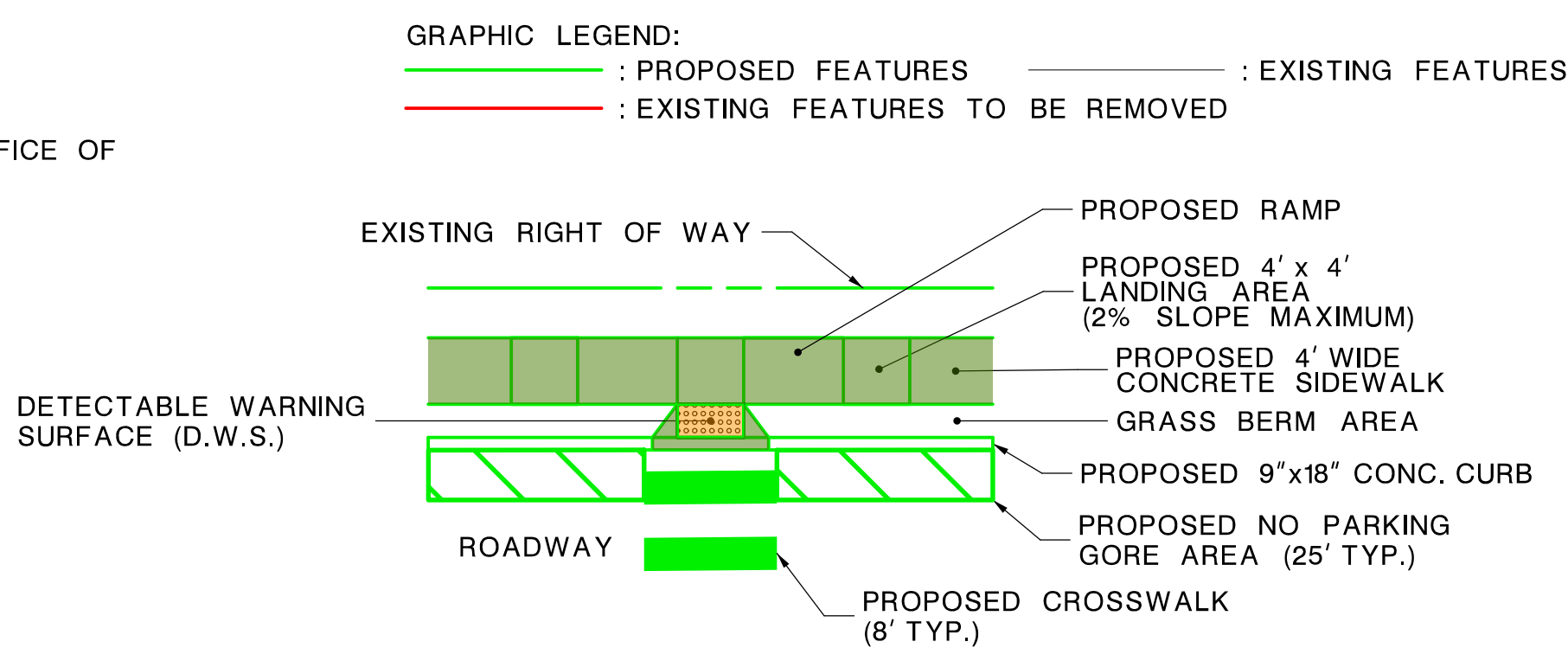


GENERAL NOTES:

- SOURCE OF MAPPING:**
 - NV5 SURVEY
 - SELECT NEARMAP AERIAL IMAGERY
 - NJ OFFICE OF INFORMATION TECHNOLOGY (NJOIT), OFFICE OF GEOGRAPHIC INFORMATION SYSTEMS (OGIS) (2015)
- SOURCE OF TAX PARCEL INFORMATION:**
 - NJGIN WEBSITE (BOUNDARIES APPROXIMATE)
 - BOROUGH OF HIGHLAND PARK TAX MAPS
- SOURCE OF UTILITY INFORMATION:**
 - UTILITY VERIFICATION PROCESS

CONSTRUCTION NOTES:

- CURB CONSTRUCTION INCLUDES 18" PAVEMENT STRIP REPLACEMENT - NOT SHOWN FOR CLARTY PURPOSES



PROGRESS PRINT
01-21-2022

REVISION	BY	C'K'D	DATE

NEW JERSEY DEPARTMENT OF TRANSPORTATION

CONSTRUCTION PLANS

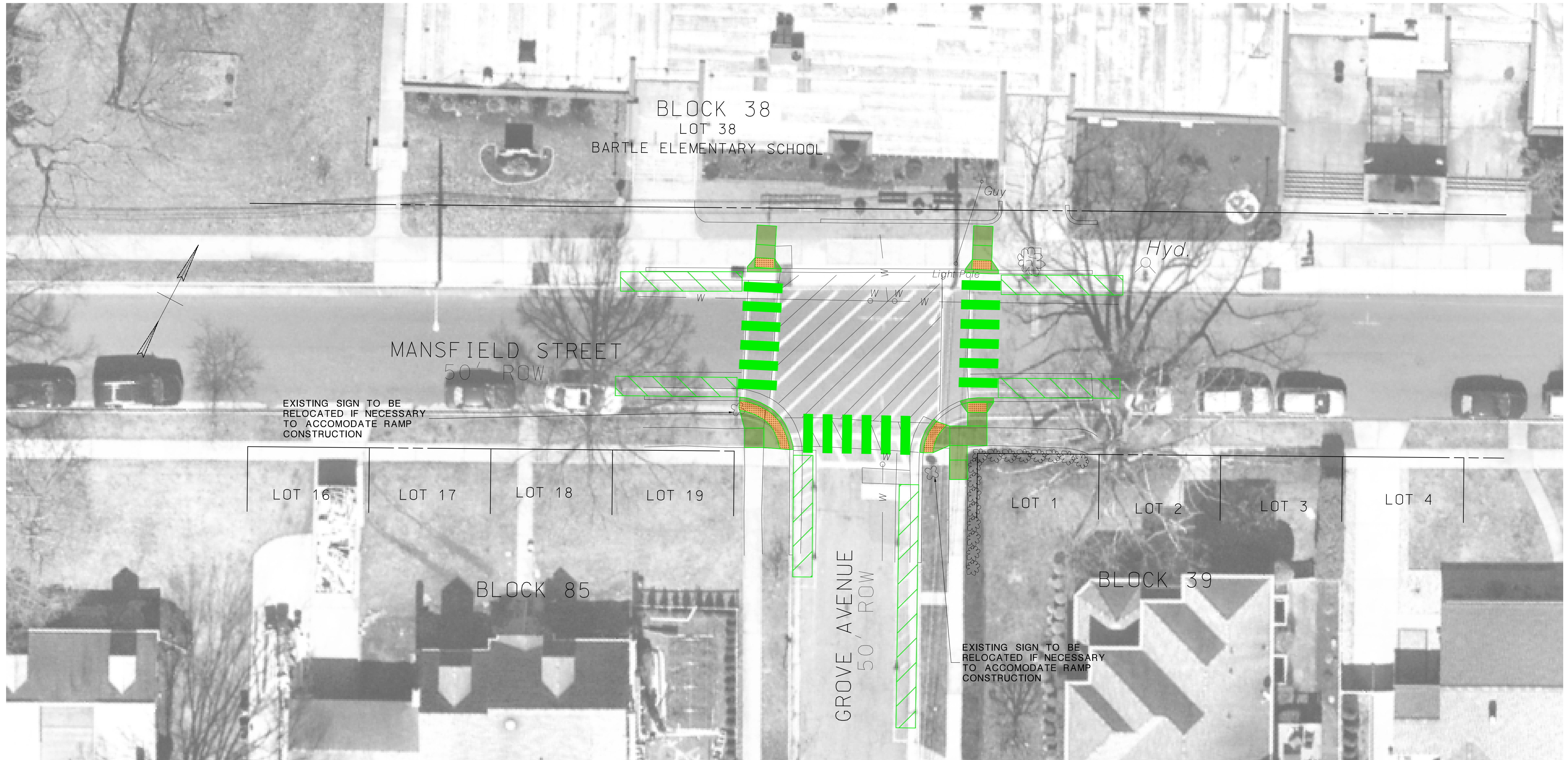
BOROUGH OF HIGHLAND PARK
SAFE ROUTES TO SCHOOL DESIGN ASSISTANCE
HIGHLAND PARK SRTS 2016 - PHASE 1
PRELIMINARY ENGINEERING PHASE

NVS, INC.
CERTIFICATION OF AUTHORIZATION NO. 24GA27930500

BOROUGH OF HIGHLAND PARK



COUNTY OF MIDDLESEX

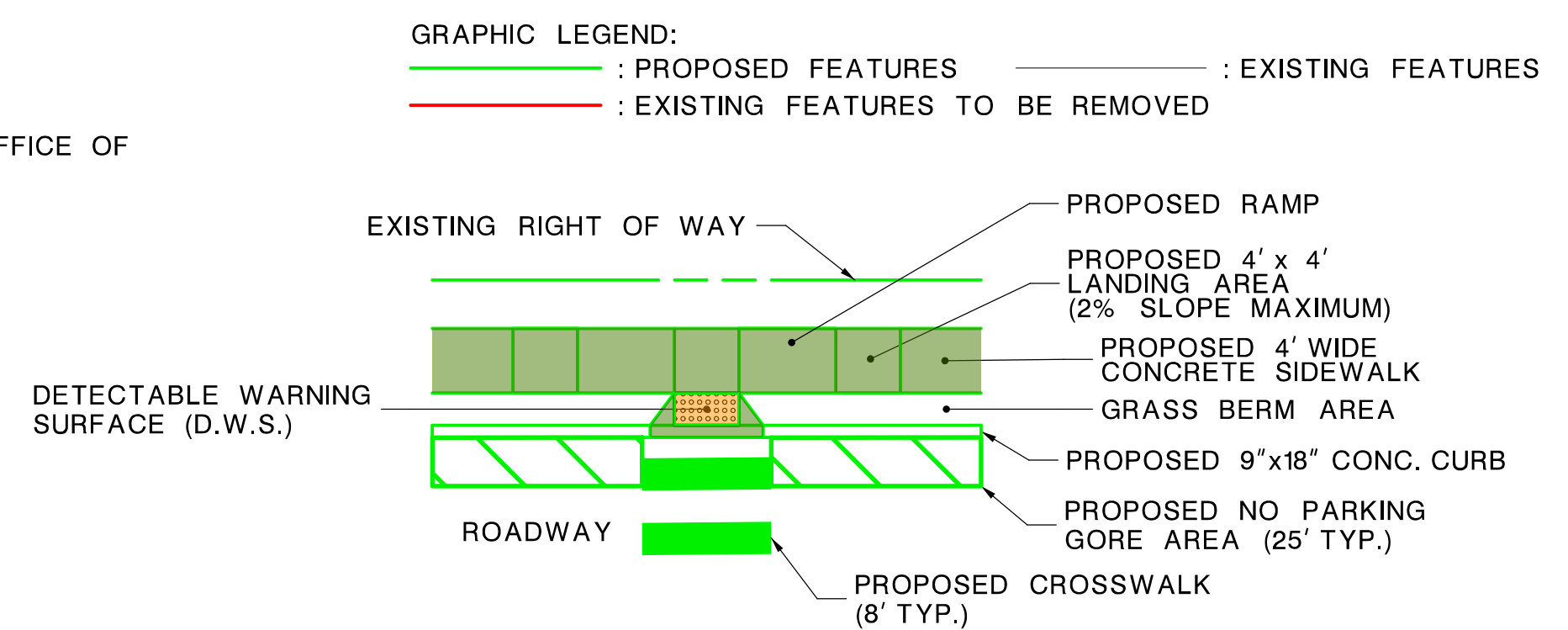


EXISTING SIGN TO BE RELOCATED IF NECESSARY TO ACCOMMODATE RAMP CONSTRUCTION

EXISTING SIGN TO BE RELOCATED IF NECESSARY TO ACCOMMODATE RAMP CONSTRUCTION

- GENERAL NOTES:**
- SOURCE OF MAPPING:**
 - NV5 SURVEY
 - SELECT NEARMAP AERIAL IMAGERY
 - NJ OFFICE OF INFORMATION TECHNOLOGY (NJOIT), OFFICE OF GEOGRAPHIC INFORMATION SYSTEMS (OGIS) (2015)
 - SOURCE OF TAX PARCEL INFORMATION:**
 - NJGIN WEBSITE (BOUNDARIES APPROXIMATE)
 - BOROUGH OF HIGHLAND PARK TAX MAPS
 - SOURCE OF UTILITY INFORMATION:**
 - UTILITY VERIFICATION PROCESS

- CONSTRUCTION NOTES:**
- CURB CONSTRUCTION INCLUDES 18" PAVEMENT STRIP REPLACEMENT - NOT SHOWN FOR CLARTY PURPOSES



PROGRESS PRINT
01-21-2022

NEW JERSEY DEPARTMENT OF TRANSPORTATION

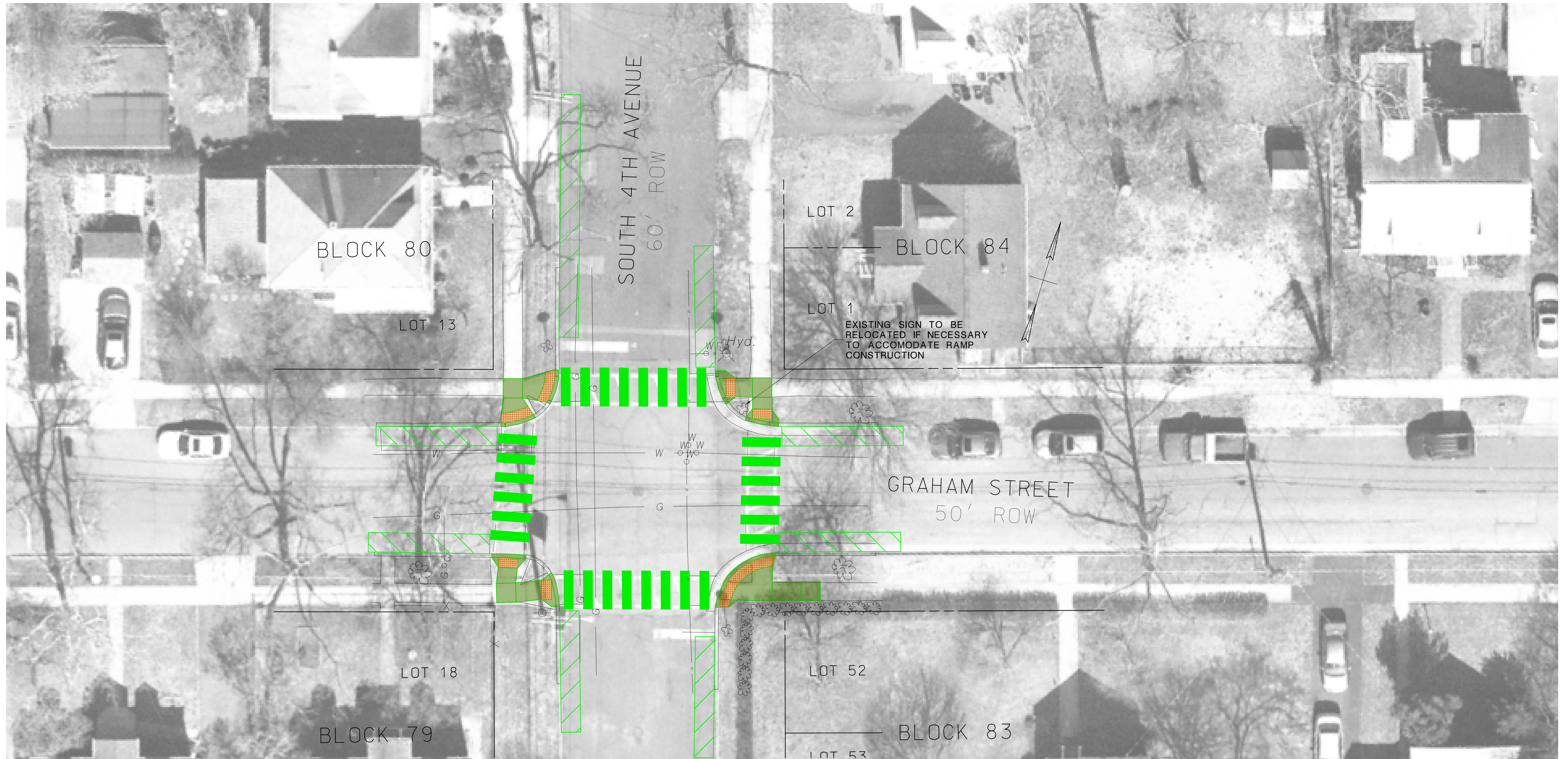
CONSTRUCTION PLANS

BOROUGH OF HIGHLAND PARK
SAFE ROUTES TO SCHOOL DESIGN ASSISTANCE
HIGHLAND PARK SRTS 2016 - PHASE 1
PRELIMINARY ENGINEERING PHASE

NV5, INC.
CERTIFICATION OF AUTHORIZATION NO. 24GA27930500

REVISION	BY	C'K'D	DATE

FILE: F:\Project\2862-00078601 - Highland Park 2016 SRTS - Phase 1\Technical\01-CADD\Construction\01.dwg

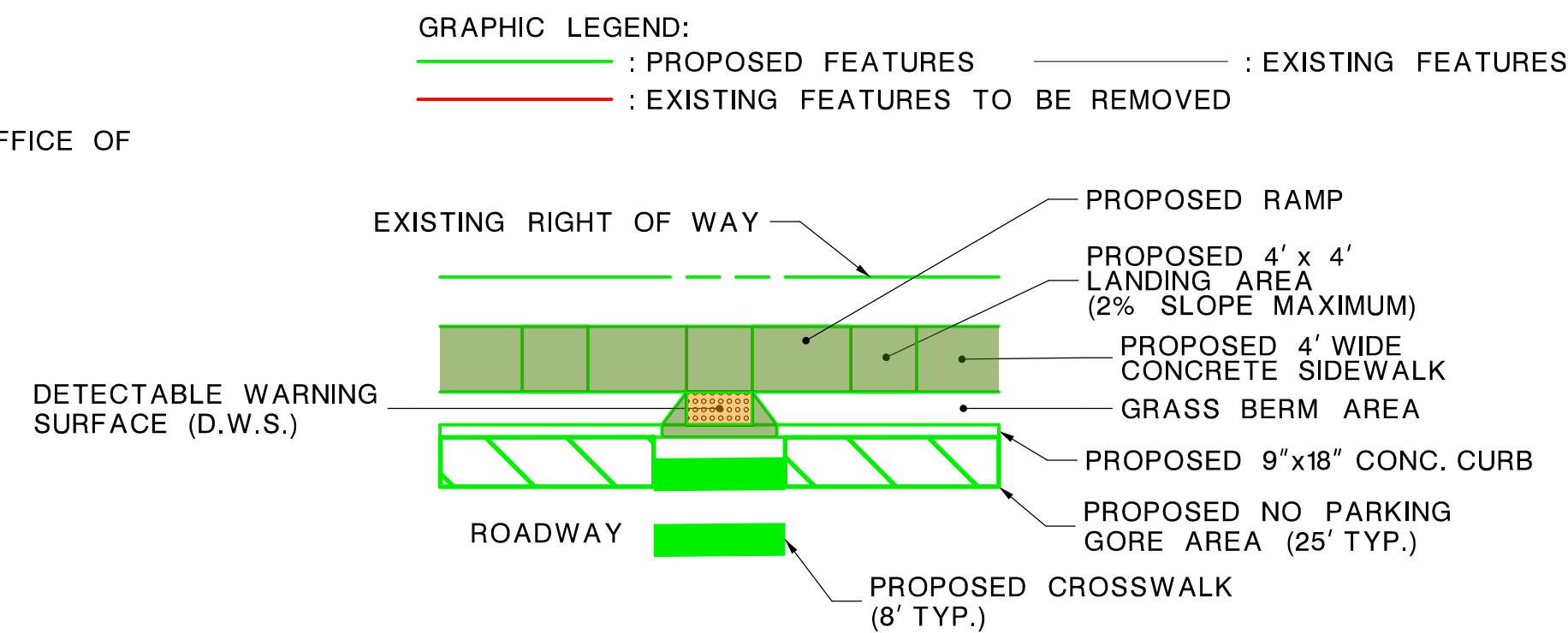


GENERAL NOTES:

- SOURCE OF MAPPING:
 - NV5 SURVEY
 - SELECT NEARMAP AERIAL IMAGERY
 - NJ OFFICE OF INFORMATION TECHNOLOGY (NJOIT), OFFICE OF GEOGRAPHIC INFORMATION SYSTEMS (OGIS) (2015)
- SOURCE OF TAX PARCEL INFORMATION:
 - NJGIN WEBSITE (BOUNDARIES APPROXIMATE)
 - BOROUGH OF HIGHLAND PARK TAX MAPS
- SOURCE OF UTILITY INFORMATION:
 - UTILITY VERIFICATION PROCESS

CONSTRUCTION NOTES:

- CURB CONSTRUCTION INCLUDES 18" PAVEMENT STRIP REPLACEMENT - NOT SHOWN FOR CLARTY PURPOSES



PROGRESS PRINT
01-21-2022

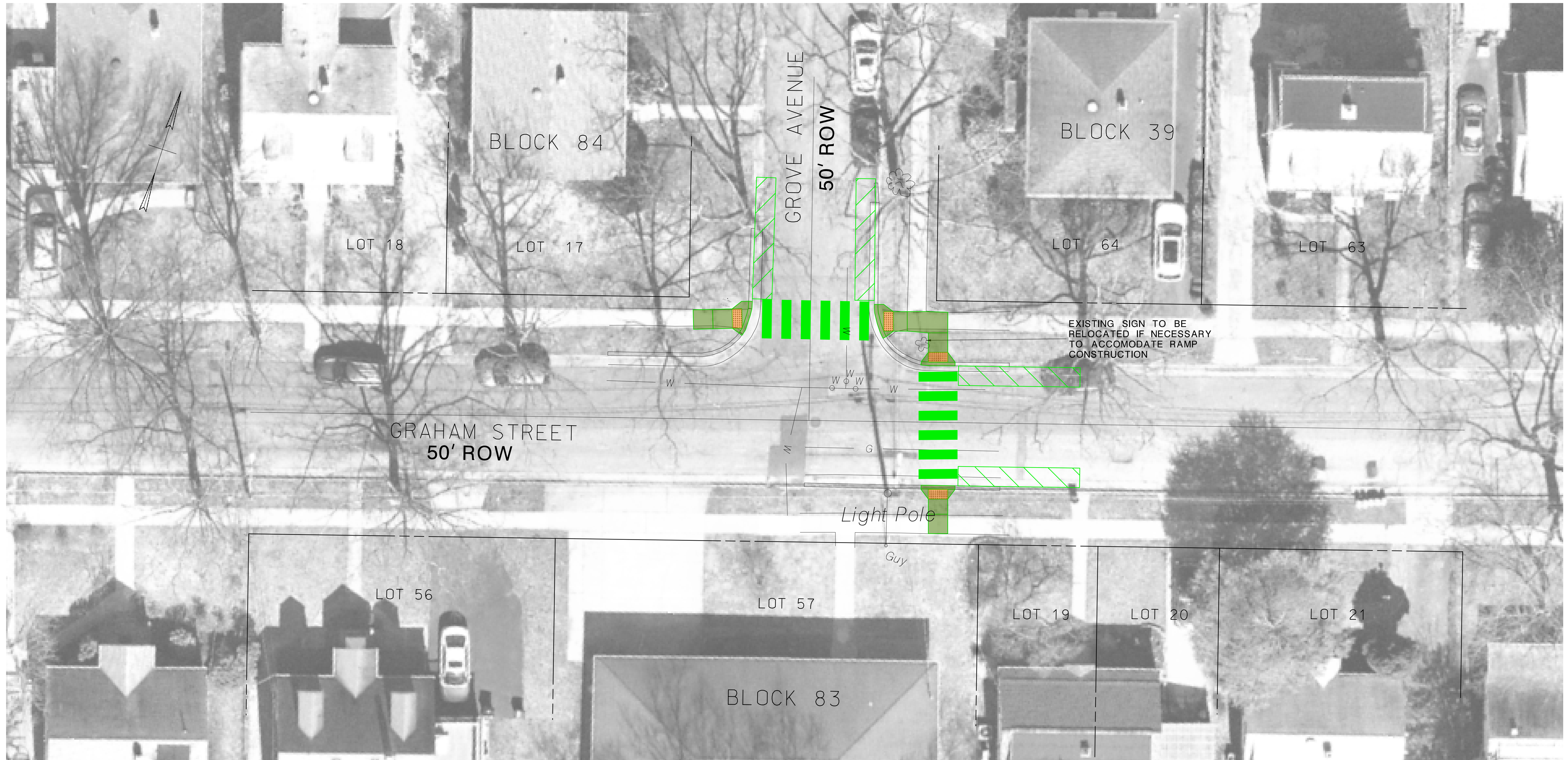
REVISION	BY	C'K'D	DATE

NEW JERSEY DEPARTMENT OF TRANSPORTATION

CONSTRUCTION PLANS

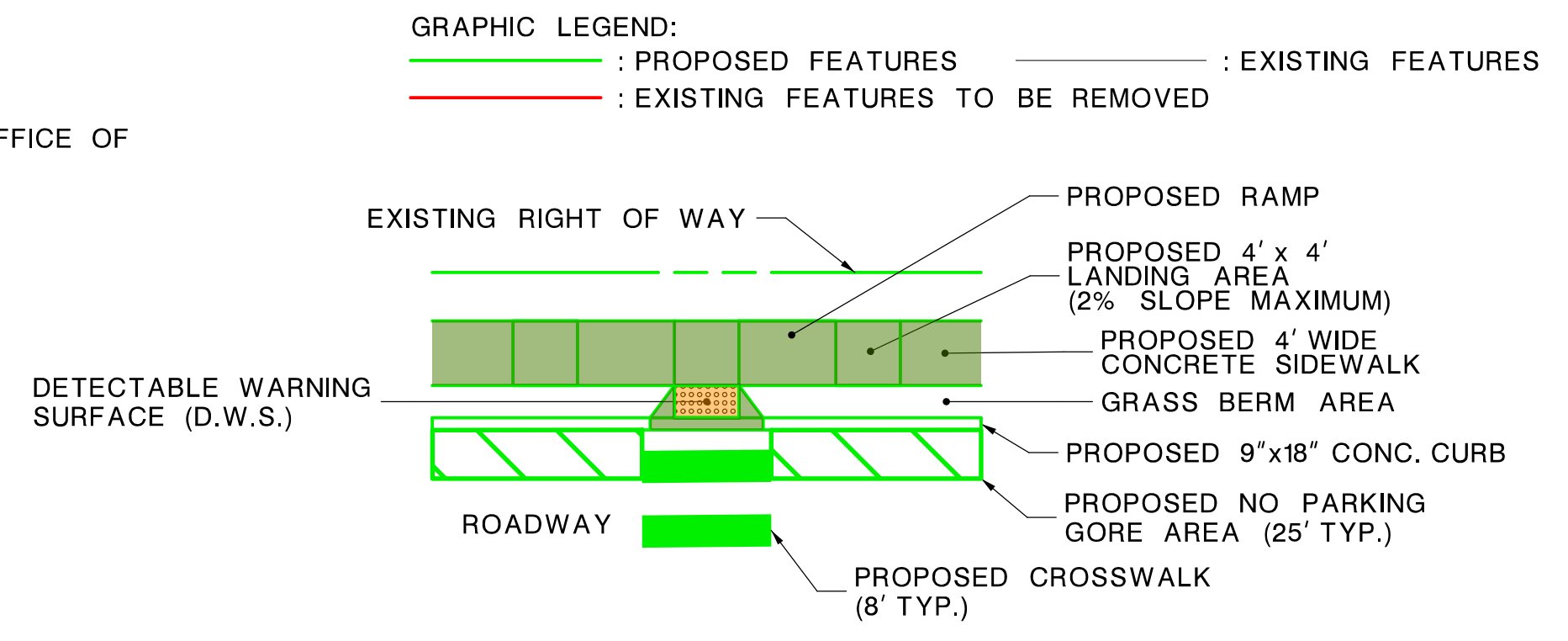
BOROUGH OF HIGHLAND PARK
SAFE ROUTES TO SCHOOL DESIGN ASSISTANCE
HIGHLAND PARK SRTS 2016 - PHASE 1
PRELIMINARY ENGINEERING PHASE

NV5, INC.
CERTIFICATION OF AUTHORIZATION NO. 24GA27930500



EXISTING SIGN TO BE RELOCATED IF NECESSARY TO ACCOMMODATE RAMP CONSTRUCTION

- GENERAL NOTES:**
- SOURCE OF MAPPING:
 - NV5 SURVEY
 - SELECT NEARMAP AERIAL IMAGERY
 - NJ OFFICE OF INFORMATION TECHNOLOGY (NJOIT), OFFICE OF GEOGRAPHIC INFORMATION SYSTEMS (OGIS) (2015)
 - SOURCE OF TAX PARCEL INFORMATION:
 - NJGIN WEBSITE (BOUNDARIES APPROXIMATE)
 - BOROUGH OF HIGHLAND PARK TAX MAPS
 - SOURCE OF UTILITY INFORMATION:
 - UTILITY VERIFICATION PROCESS
- CONSTRUCTION NOTES:**
- CURB CONSTRUCTION INCLUDES 18" PAVEMENT STRIP REPLACEMENT - NOT SHOWN FOR CLARTY PURPOSES



PROGRESS PRINT
01-21-2022

NEW JERSEY DEPARTMENT OF TRANSPORTATION

CONSTRUCTION PLANS

BOROUGH OF HIGHLAND PARK
SAFE ROUTES TO SCHOOL DESIGN ASSISTANCE
HIGHLAND PARK SRTS 2016 - PHASE 1
PRELIMINARY ENGINEERING PHASE

NV5, INC.
CERTIFICATION OF AUTHORIZATION NO. 24GA27930500

REVISION	BY	C'K'D	DATE