

HIGHLAND PARK RIVER GREENWAY

PUBLIC WORKSHOP PRESENTATION



ETM ASSOCIATES, L.L.C.

PUBLIC SPACE MANAGEMENT
PUBLIC SPACE DESIGN
PROJECT MANAGEMENT

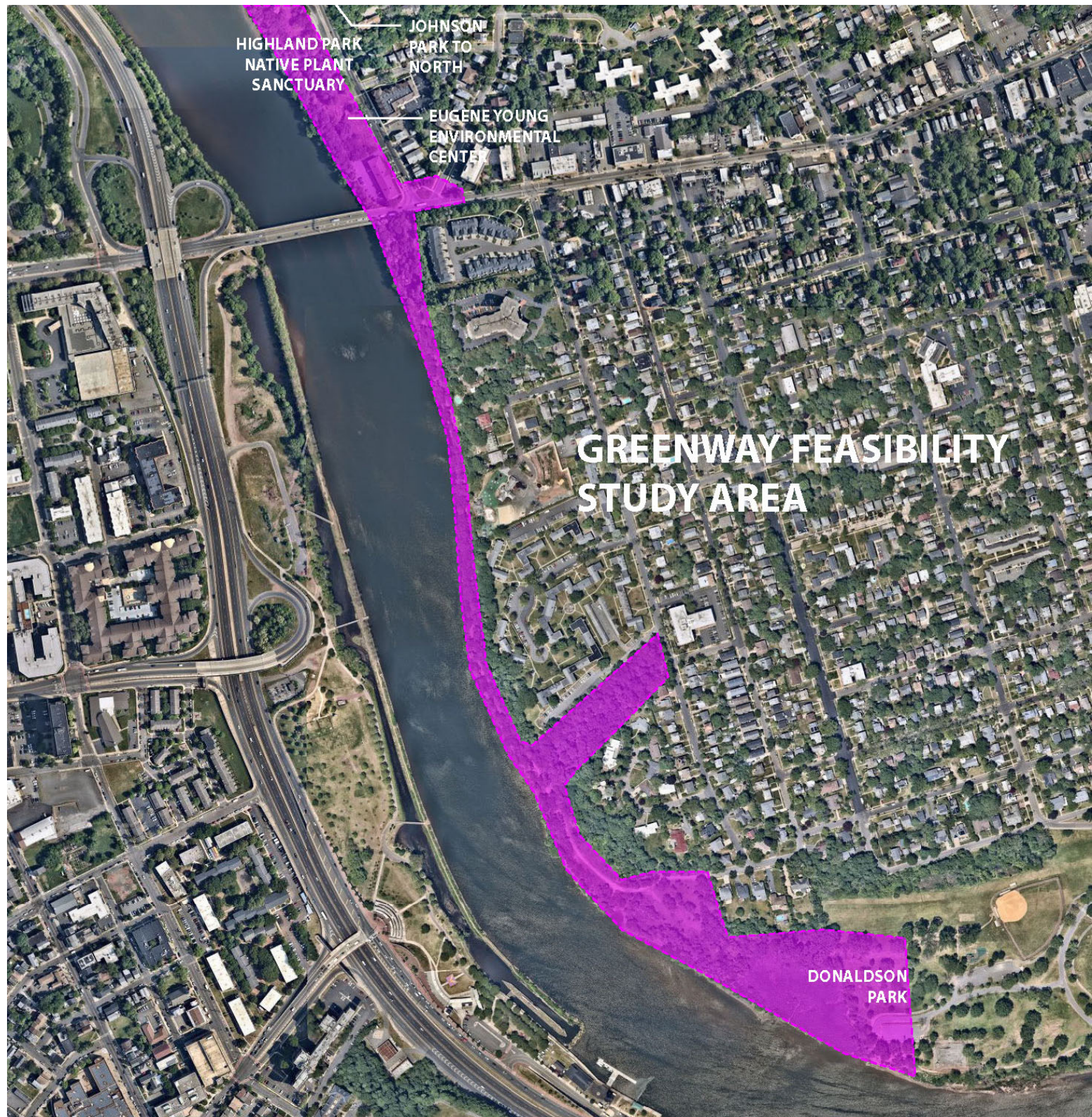
man|TERRA
DESIGN LLC

OUR PROCESS

- *SITE SURVEYING + WETLAND BOUNDARIES*
- *SITE INVESTIGATIONS AND ENGINEERING ANALYSIS*
- *GEOTECHNICAL AND PERMIT NEEDS ANALYSIS*
- *CONCEPTUAL DESIGN DEVELOPMENT*
- *NEXT STEPS ANALYSIS*



GREENWAY
FEASIBILITY
STUDY



HIGHLAND PARK
NATIVE PLANT
SANCTUARY

JOHNSON
PARK TO
NORTH

EUGENE YOUNG
ENVIRONMENTAL
CENTER

**GREENWAY FEASIBILITY
STUDY AREA**

DONALDSON
PARK

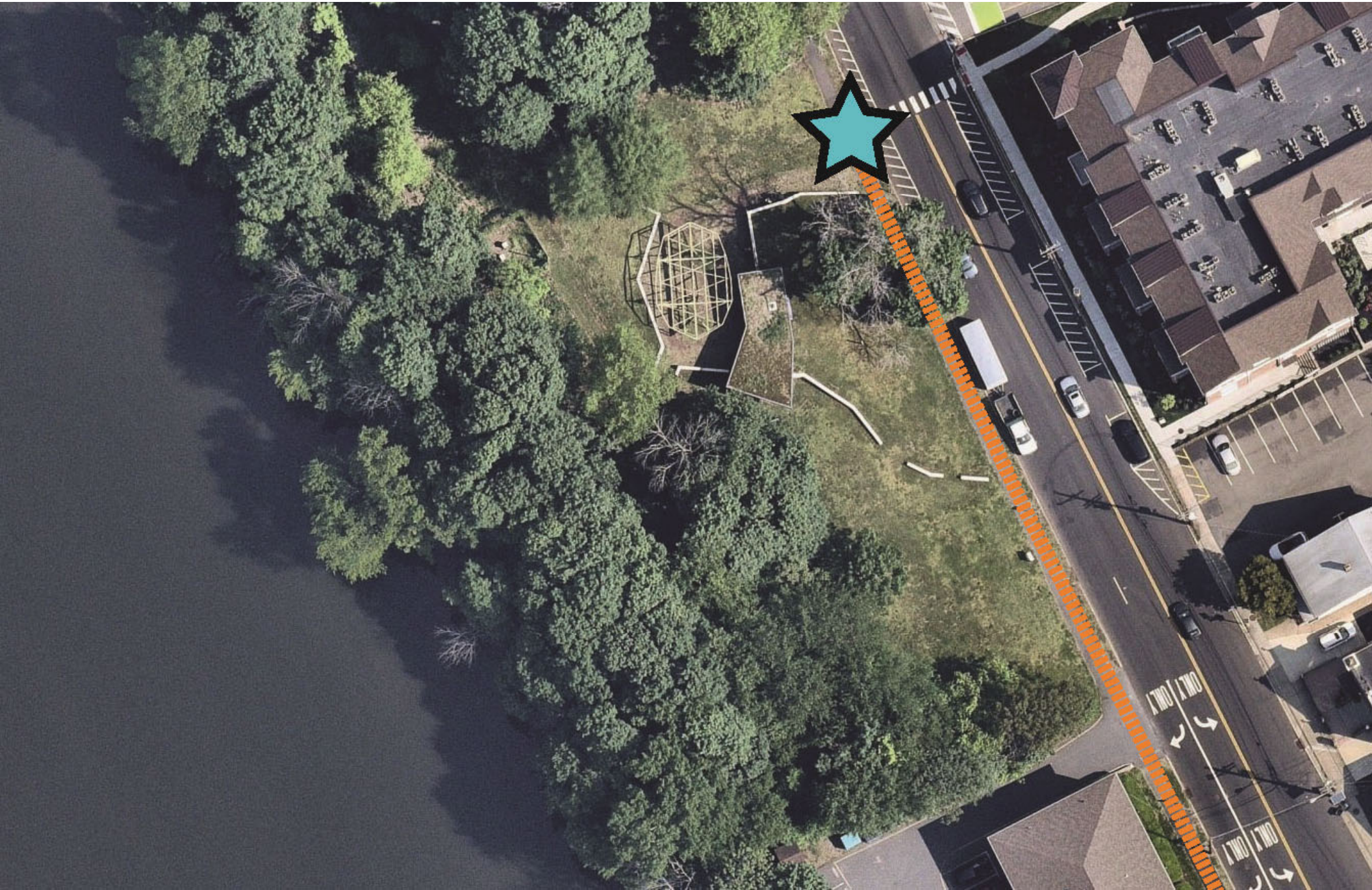
HIGHLAND PARK RIVER GREENWAY

PROPOSED ALIGNMENT

- 1 NORTH TRAIL HEAD @ HP ENVIRONMENTAL CENTER
- 2 NJ 27 CROSSING
- 3 LINEAR TRAIL - TYPICAL CONDITION
- 4 KAYAK LAUNCH
- 5 WETLAND BOARDWALK
- 6 SOUTH TRAIL HEAD @ DONALDSON PARK



LOCATION 1 – NORTH TRAILHEAD @ ENVIRONMENTAL CENTER

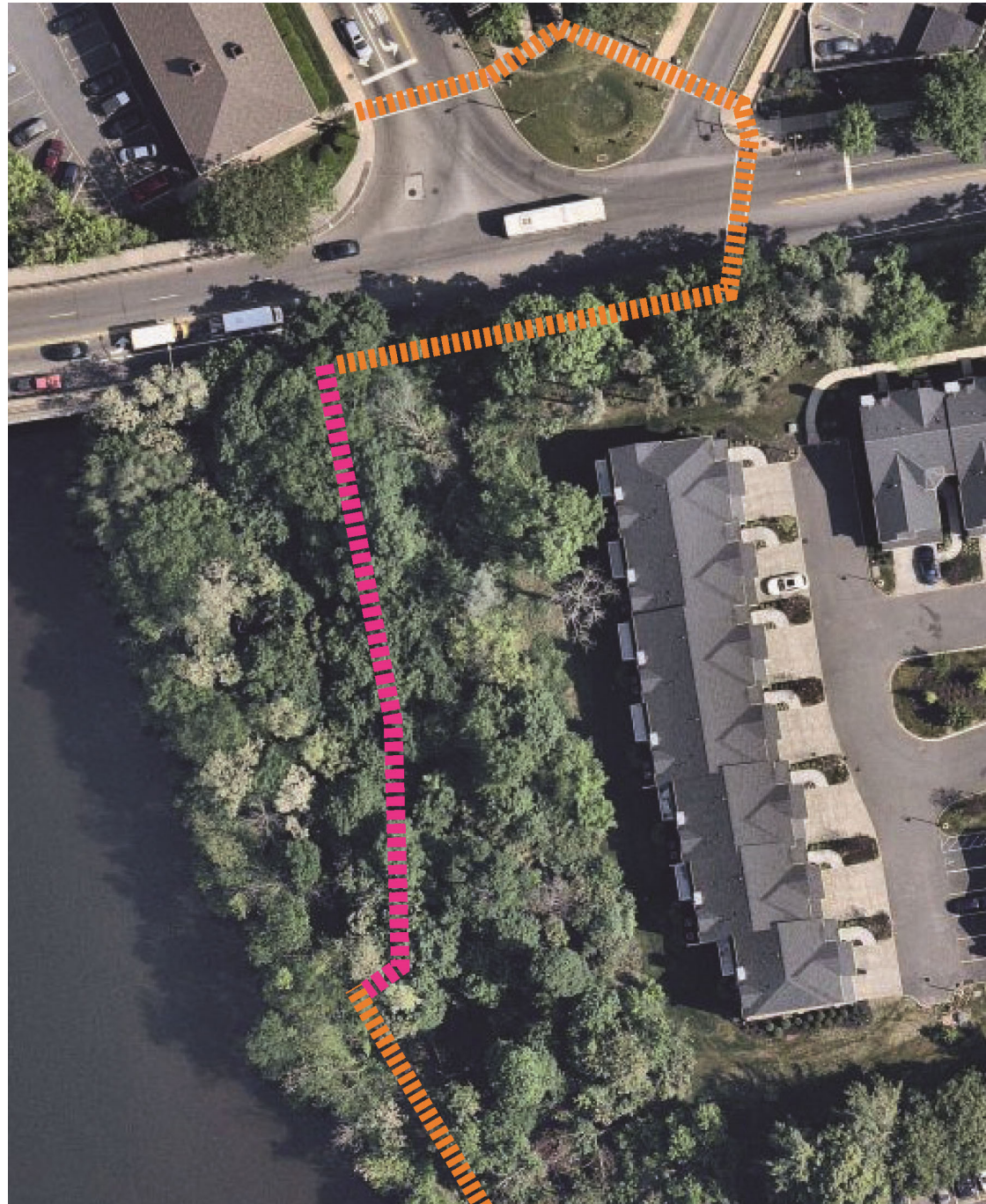


LOCATION 1 – NORTH TRAILHEAD AT ENVIRONMENTAL CENTER

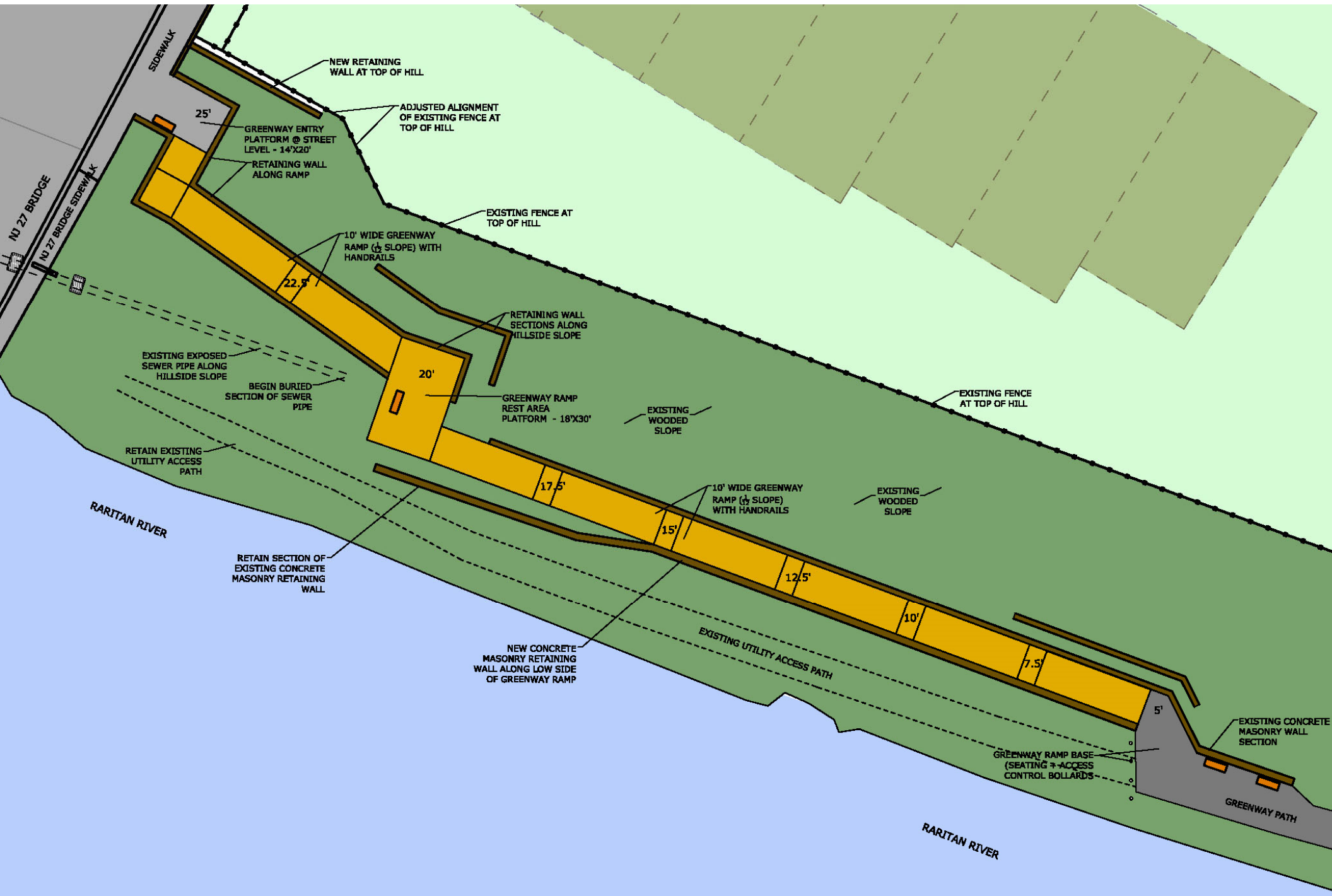
- INTERSECTION PEDESTRIAN CROSSING STRIPING (IN-PLACE)
- TRAILHEAD WELCOME SIGNAGE/KIOSK
- “HP RIVER GREENWAY” SITE MAP SIGNAGE
- TRASH/RECYCLING
- ACTIVATE THE ENVIRONMENTAL CENTER AND THE HP NATIVE PLANT SANCTUARY



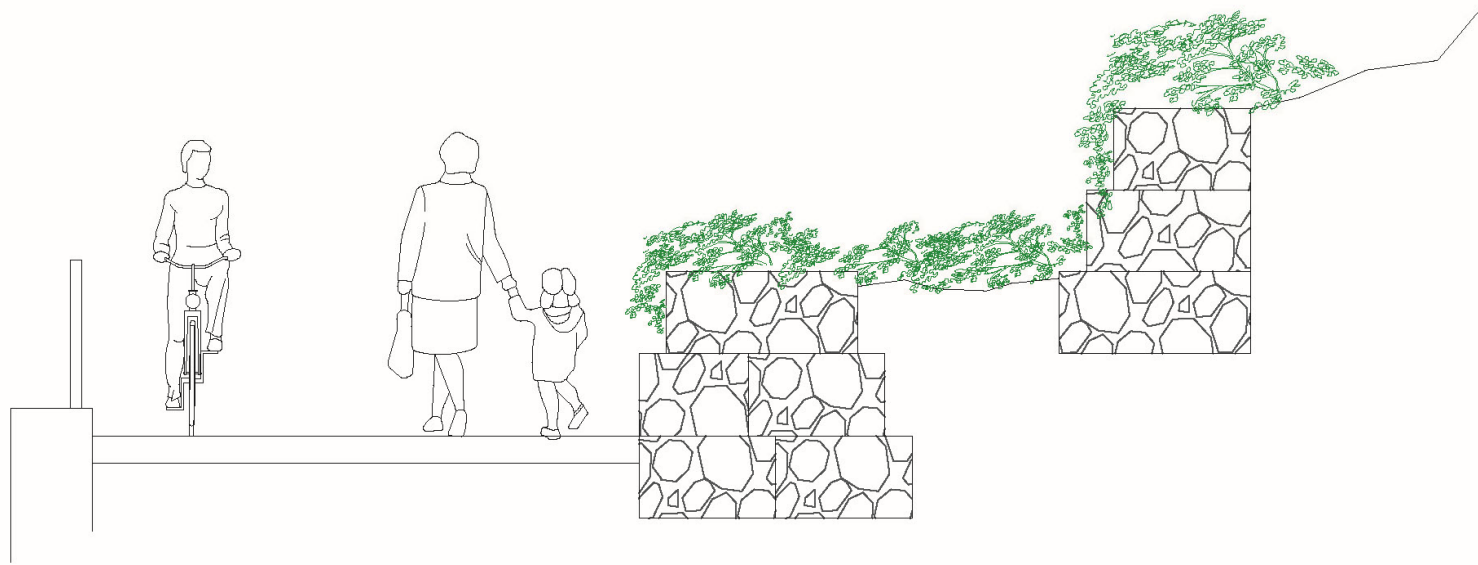
LOCATION 2 – NJ 27 PEDESTRIAN CROSSING – OPTION C – RAMP



LOCATION 2 – NJ 27 PEDESTRIAN CROSSING – RAMP



LOCATION 2 – NJ 27 PEDESTRIAN CROSSING – RAMP



LOCATION 3 – RIVER EDGE TRAIL

LINEAR HARDSCAPE TRAIL FOR APPROXIMATELY ½ MILE.

REST LOCATIONS ALONG WAY WITH BENCHES AND SIGNAGE
(ENVIRONMENTAL).

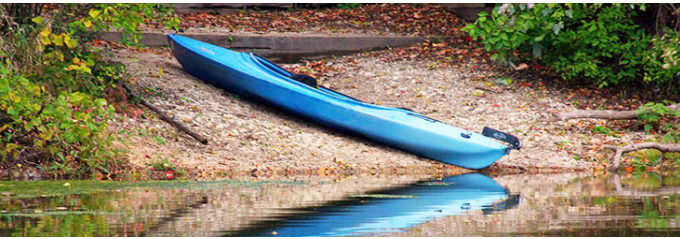


LOCATION 3 – RIVER EDGE TRAIL



LOCATION 4 – KAYAK LAUNCH

- FORMER RED'S MARINA AT AYRES BEACH
- IDEAL ACCESS FROM EXISTING STREET
- EXISTING PROTECTED COVE AT WATER EDGE
- SOME HARDSCAPE REMAINS IN PLACE
- INTERPRITIVE SIGNAGE (HISTORY - AYRES BEACH AND RED'S MARINA)



LOCATION 5 – WETLAND BOARDWALK

- *ELEVATED BOARDWALK WITHIN WOODED WETLAND NEAR WETLAND*
- *INTERPETATION – BIRDWATCHING + WETLAND FLORA FAUNA EDUCATION*
- *BUILT-IN NATURE BLIND WALLS*



LOCATION 5 – WETLAND BOARDWALK

- *ELEVATED BOARDWALK CONNECTING TO DONALDSON PARK*
- *MUST AVOID FLOODWAY*
- *DECK VIEWING AREA AND NATURE BLIND OPPORTUNITIES*



LOCATION 5 –
WETLAND BOARDWALK



LOCATION 5 –
WETLAND BOARDWALK



LOCATION 6 – TRAIL HEAD AT DONALDSON PARK

- ADA ACCESS FROM PARKING LOT TO WETLAND BOARDWALK AND BEYOND
- TRAILHEAD WELCOME SIGNAGE/KIOSK
- “HP RIVER GREENWAY” SITE MAP SIGNAGE
- TRASH/RECYCLING



THANK YOU!

FOLLOW UP QUESTIONS? EMAIL TERI JOVER AT:

tjover@hpboro.com